

Standard Specifications by nominal size (mm)

SPEC	H ₂ O	Gases	A	B	C	D	E
15	0.1-1L/min 0.3-3L/min 0.5-5L/min	3-30L/min 10-100L/min 15-150L/min	150	110	116	130	100
20	0.3-3L/min 0.5-5L/min	10-100L/min 15-150L/min	200	160	166	180	150

* The flow rates given above are based on a usage environment of 1atm, 20°C, for conversion of Air, and 20°C (0.3MPa) for conversion of H₂O.

* When you need scale under load pressure of Air conversion, please confer with us.

Dwg. No. FR320124A1

Name Purge flowmeter with needle valve
MODEL: RK1970V (Outline needle)

Customer

MODEL: RK1970-VU-**-

Specifications

Fluid:

Flow rate:

Total length:

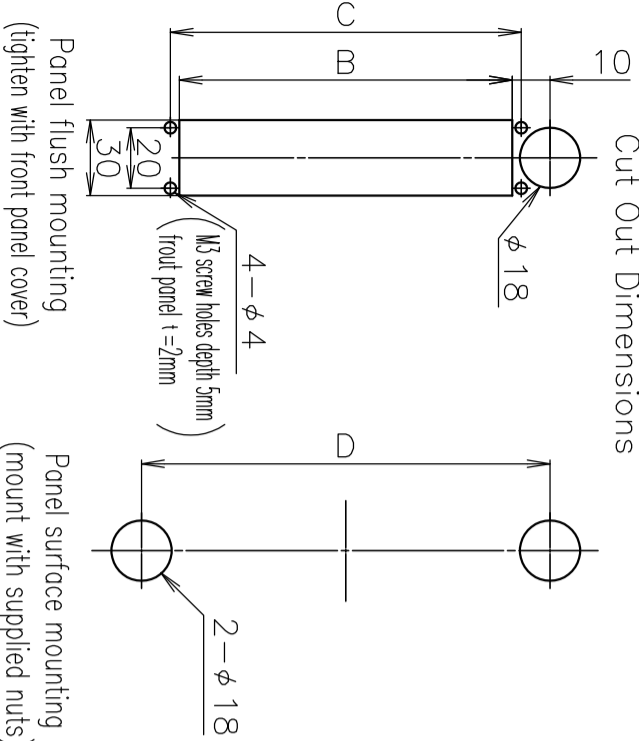
Pressure: (inlet) (outlet)

Temperature:

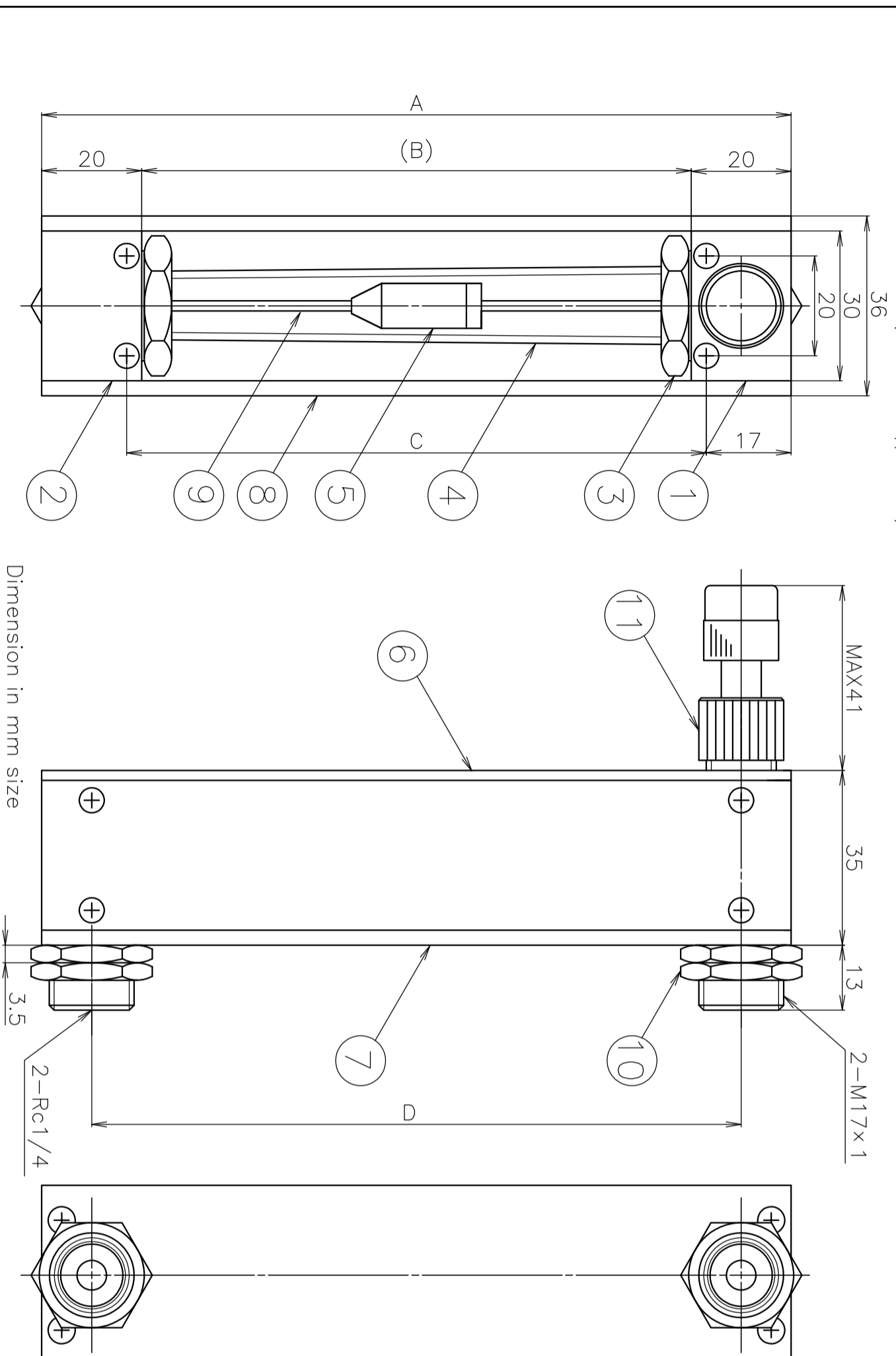
Connection:

Remarks:

Cut Out Dimensions



CAUTION!
To prevent breaking glass by float, DO NOT put pressure change directly on this flowmeter in case you set electromagnetic valve, open and shut it when lay the flowmeter.



Dimension in mm size

11	Needle valve	—	1
10	Mounting nut	Brass	4
9	Shaft	316 Stainless steel	1
8	Side plate	Al	2
7	Back plate	Yellow acrylic resin	1
6	Front plate	Clear acrylic resin	1
5	Float	316 Stainless steel	1
4	Tube	Hard glass	1
3	Cap nut	Brass	2
2	Lower block	316 Stainless steel	1
1	Upper block	316 Stainless steel	1

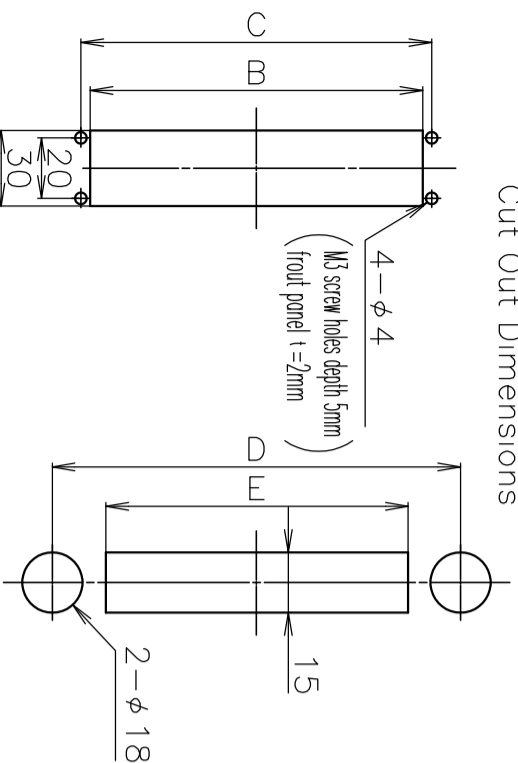
No.	NAME	MATERIAL	Qt.	NOTES
SCALE 1/1				
3RD ANGLE PROJ.				

KOFLOC Corp.

DESIGNED	DRAWN	CHECKED	APPROVED
----------	-------	---------	----------

DATE / /

Cut Out Dimensions



Standard Specifications by nominal size (mm)

SPEC	H ₂ O	Gases	A	B	C	D	E
15	0.1-1L/min 0.3-3L/min 0.5-5L/min	3-30L/min 10-100L/min 15-150L/min	150	110	116	130	100
20	0.3-3L/min 0.5-5L/min	10-100L/min 15-150L/min	200	160	166	180	150
Alarm setting range	20%-90% F.S. All of the above						
Contact capacity	AC100V/DC100V (AC10VA/DC10W)						
Contact method	(A) ON if flow exceeds the preset valve (B) ON if flow falls below the preset valve						

* The flow rates given above are based on a usage environment of 1atm, 20°C, for conversion of Air, and 20°C (0.3MPa) for conversion of H₂O.

* When you need scale under load pressure of Air conversion, please confer with us.

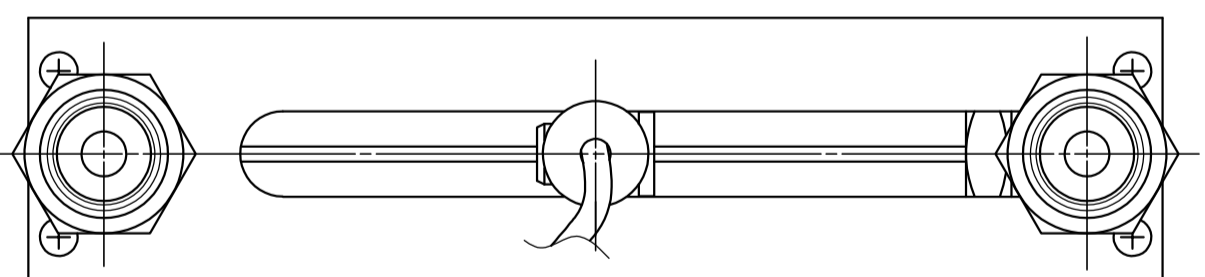
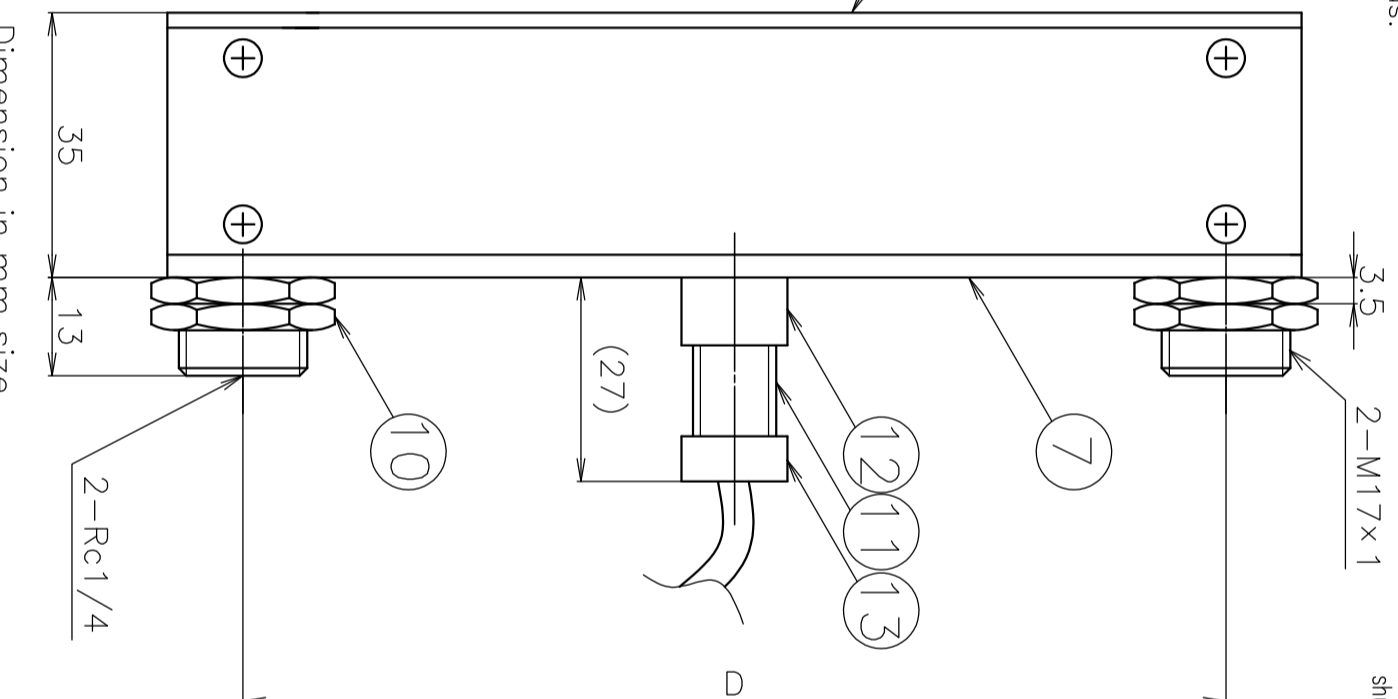
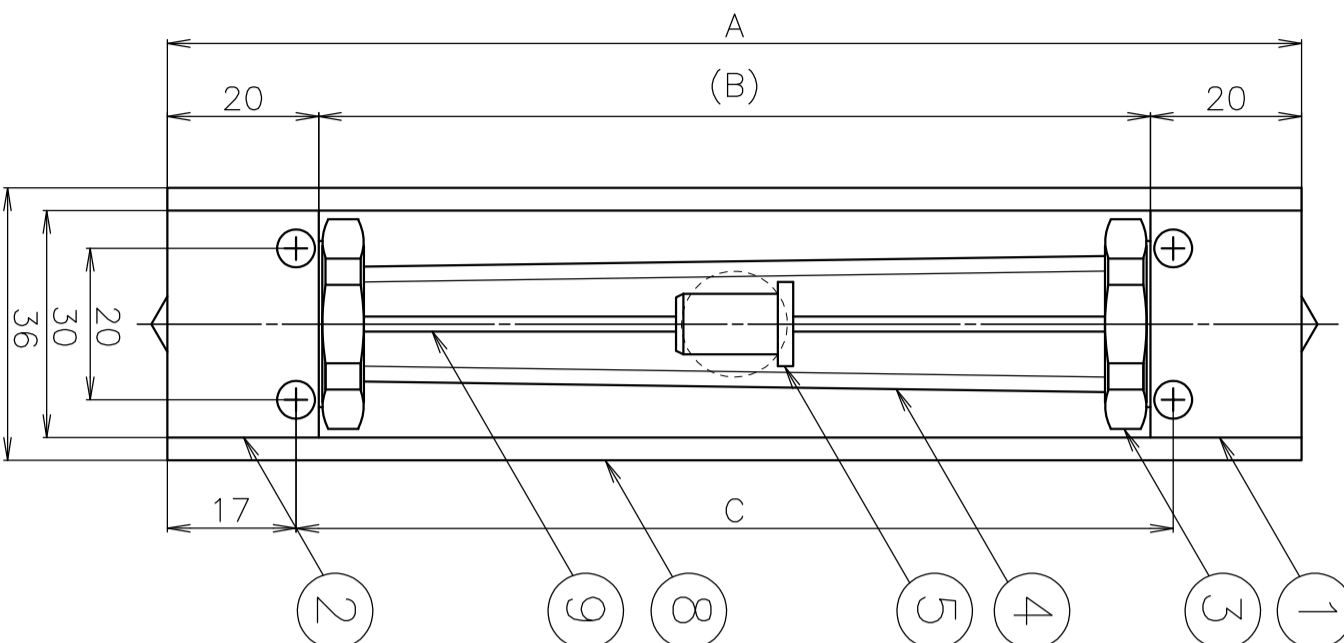
Fluids	H ₂ O and Gases (Hz cannot be used)
Accuracy	F.S. ±5%
Proof pressure	0.5MPa(G)
Fluid contact materials	316 Stainless steel,FKM, Hard glass,POM
Available scale	10:1
Connection end	Rc 1/4
Environmental Temp.	10-35°C (Non condensing)

CAUTION!

To prevent breaking glass by float, DO NOT put pressure change directly on this flowmeter in case you set electromagnetic valve, open and shut it when lay the flowmeter.

Panel flush mounting
(tighten with front panel cover)

Panel surface mounting
(mount with supplied nuts)



Dwg. No. FR320128A1

Name Flowmeter with reed switch sensor MODEL RK1975

Customer

MODEL: RK1975-0-**-

Specifications

Fluid:

Flow rate:

Total length:

Temperature:

Connection:

Contact motion:

Remarks:

13	Senser cover nut	POM	1
12	Fix nut	POM	1
11	Reed switch sensor	POM(case)	1
10	Mounting nut	Brass	4
9	Shaft	316 Stainless steel	1
8	Side plate	Al	2
7	Back plate	Yellow acrylic resin	1
6	Front plate	Clear acrylic resin	1
5	Float	316 Stainless steel	1
4	Tube	Hard glass	1
3	Cap nut	Brass	2
2	Lower block	316 Stainless steel	1
1	Upper block	316 Stainless steel	1

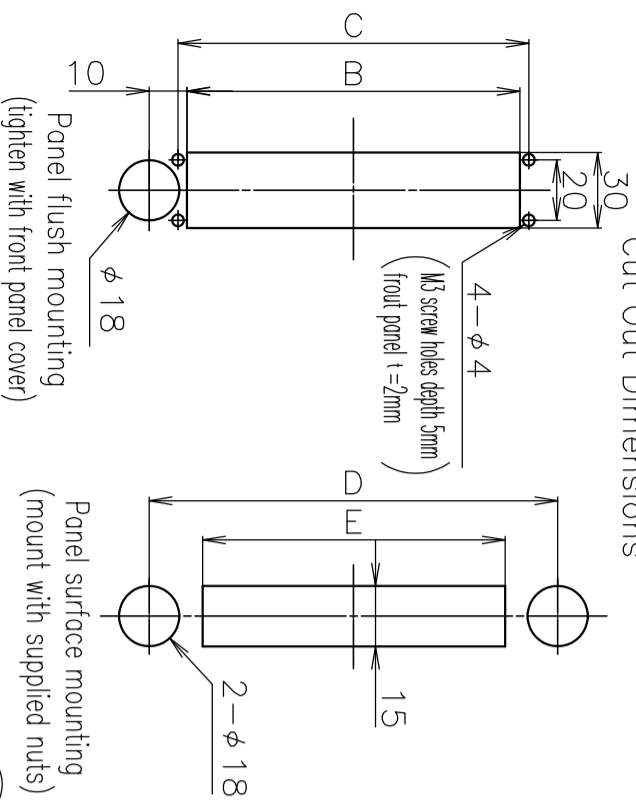
No.	NAME	MATERIAL	Qt.	NOTES
SCALE 1/1				
3RD ANGLE PROJ. V				

KOFLOC Corp.

DESIGNED DRAWN CHECKED APPROVED

DATE / /

Cut Out Dimensions



Standard Specifications by nominal size (mm)

SPEC	H ₂ O	Gases	A	B	C	D	E
15	0.1-1L/min 0.3-3L/min 0.5-5L/min	3-30L/min 10-100L/min 15-150L/min	150	110	116	130	100
20	0.3-3L/min 0.5-5L/min	10-100L/min 15-150L/min	200	160	166	180	150
Alarm setting range	20%-90% F.S. All of the above						
Contact capacity	AC100V/DC100V (AC10VA/DC10W)						
Contact method	(A) ON if flow exceeds the preset valve (B) ON if flow falls below the preset valve						

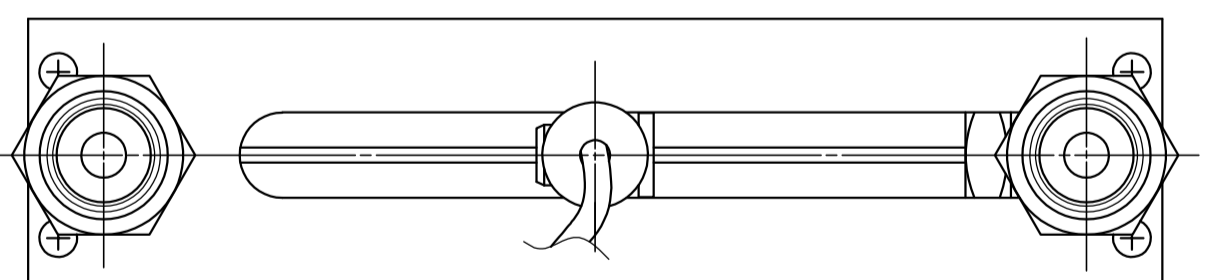
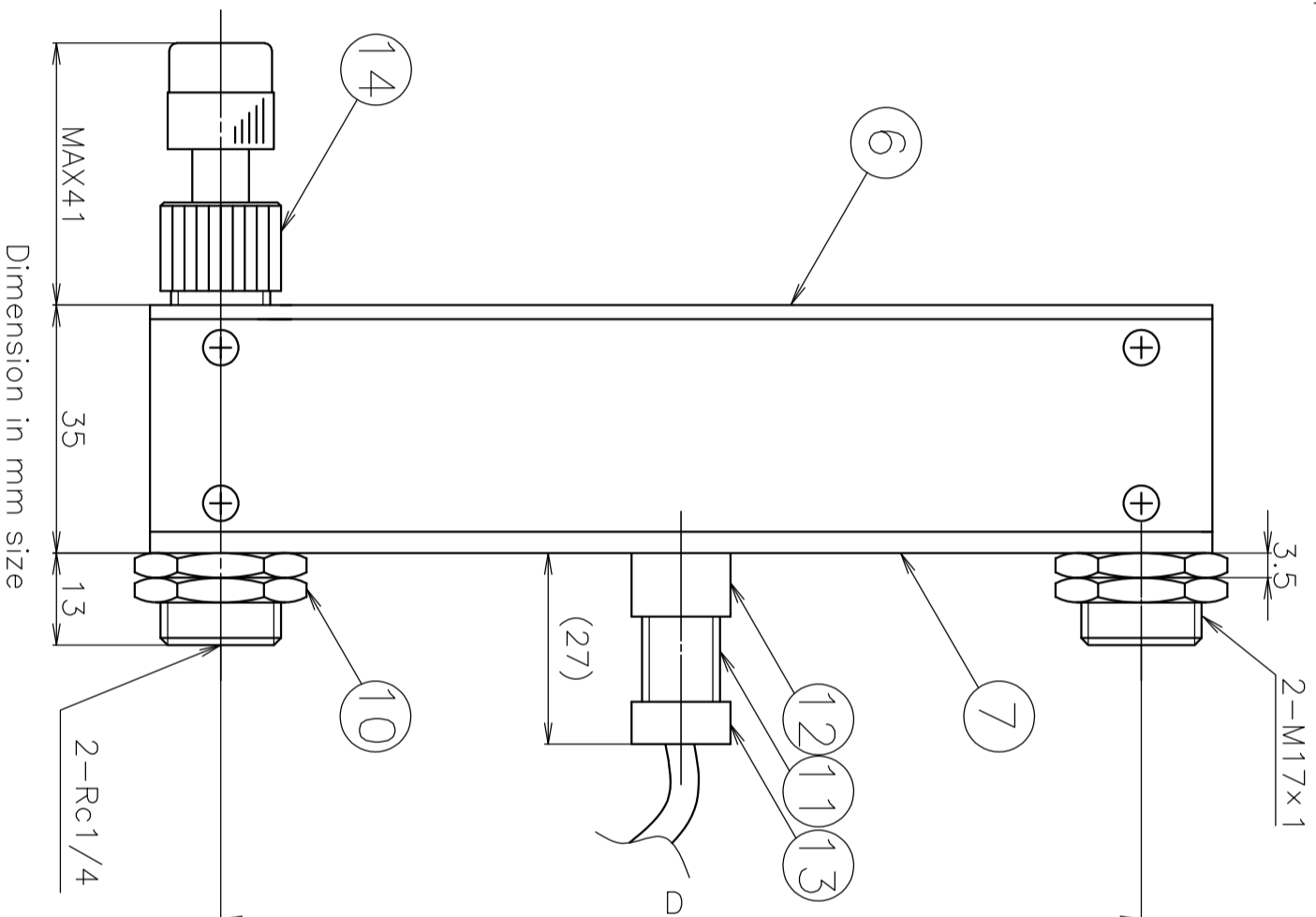
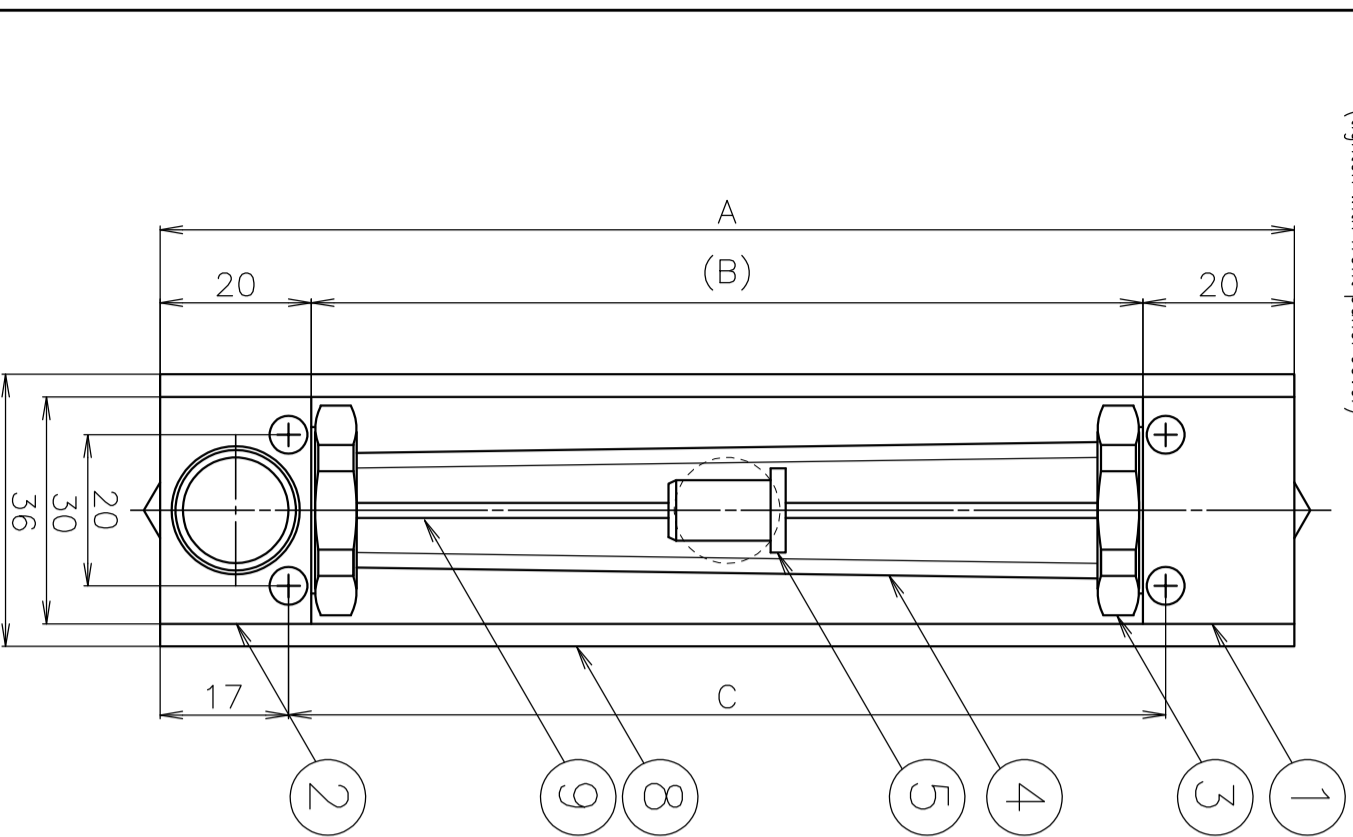
Fluids	H ₂ O and Gases (Hz cannot be used)
Accuracy	F.S.±5%
Proof pressure	0.5MPa(G)
Fluid contact materials	316 Stainless steel,FKM, Hard glass,POM,PTFE,Nylon
Available scale	10:1
Connection end	Rc1/4
Environmental Temp.	10-35°C (Non condensing)

Dwg. No.	FR320129A1
Name	Flowmeter with reed switch sensor MODEL:RK1975V (inline needle)
Customer	
MODEL:RK1975-VD-**-**	
Specifications	
Fluid:	
Flow rate:	
Total length:	
Pressure:	(inlet) (outlet)
Temperature:	
Connection:	
Contact motion:	
Remarks:	

* The flow rates given above are based on a usage environment of 1atm,20°C, for conversion of Air, and 20°C(0.3MPa) for conversion of H₂O.

* When you need scale under load pressure of Air conversion, please confer with us.

CAUTION!
To prevent breaking glass by float, DO NOT put pressure change directly on this flowmeter in case you set electromagnetic valve, open and shut it when lay the flowmeter.



14	Needle valve		1	
13	Sensor cover nut	POM	1	
12	Fix nut	POM	1	
11	Reed switch sensor	POM(case)	1	
10	Mounting nut	Brass	4	
9	Shaft	316 Stainless steel	1	
8	Side plate	Al	2	
7	Back plate	Yellow acrylic resin	1	
6	Front plate	Clear acrylic resin	1	
5	Float	316 Stainless steel	1	
4	Tube	Hard glass	1	
3	Cap nut	Brass	2	
2	Lower block	316 Stainless steel	1	
1	Upper block	316 Stainless steel	1	
No.	NAME	MATERIAL	Qt.	NOTES
SCALE	1/1			
3RD ANGLE PROJ.				

KOFLOC Corp.

DESIGNED	DRAWN	CHECKED	APPROVED

DATE

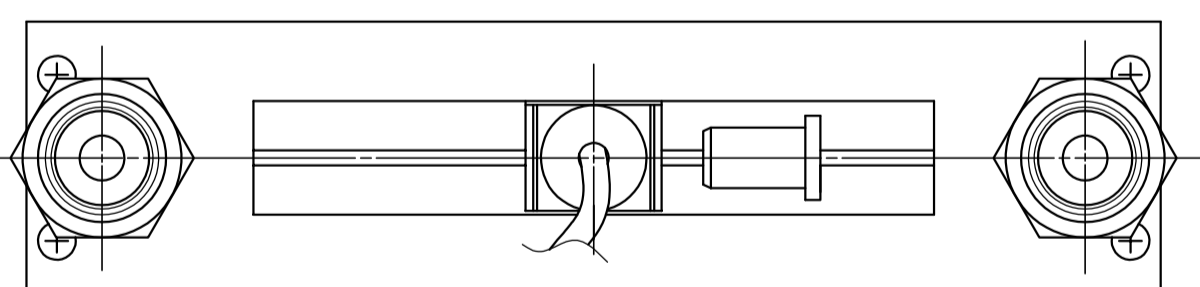
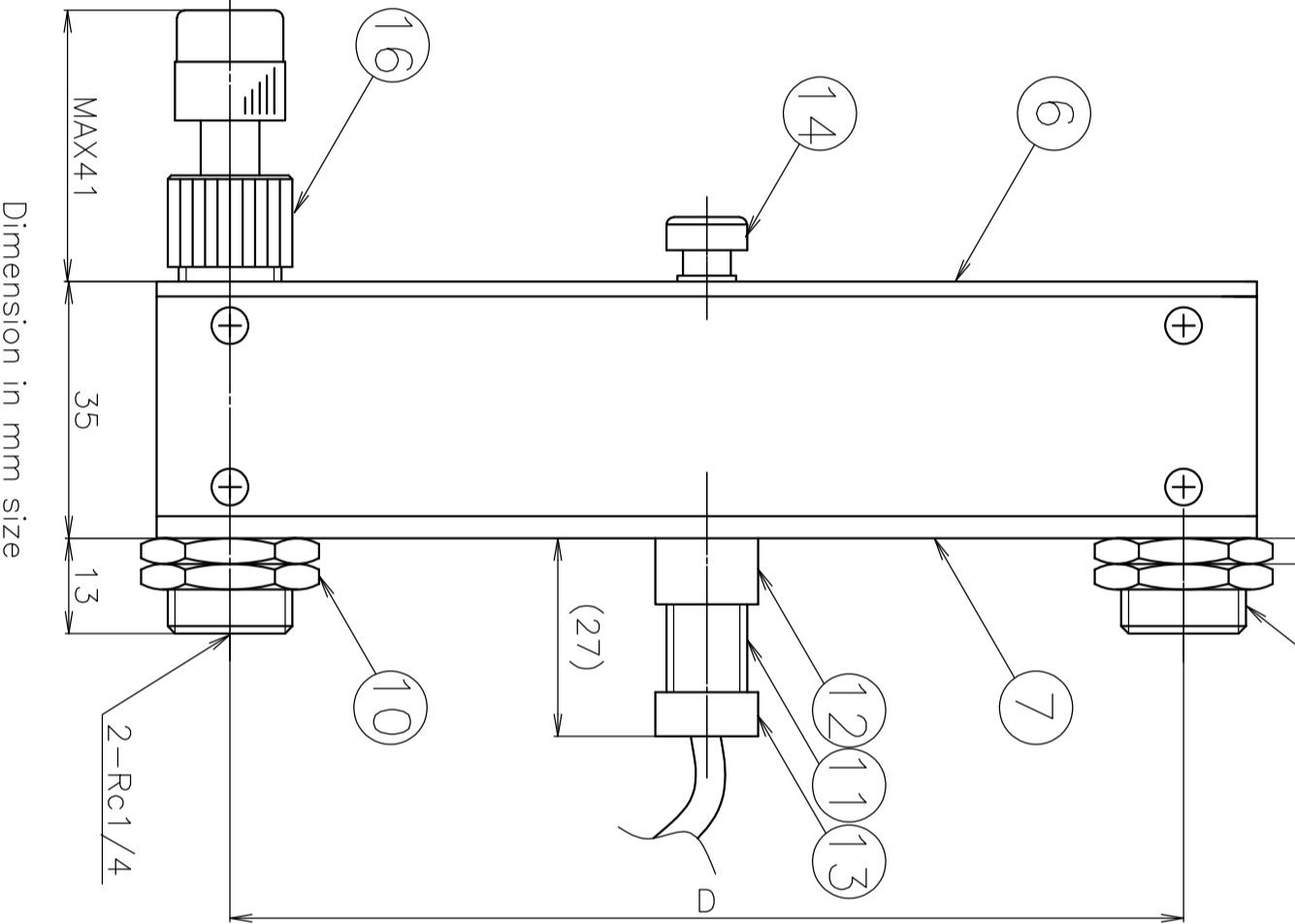
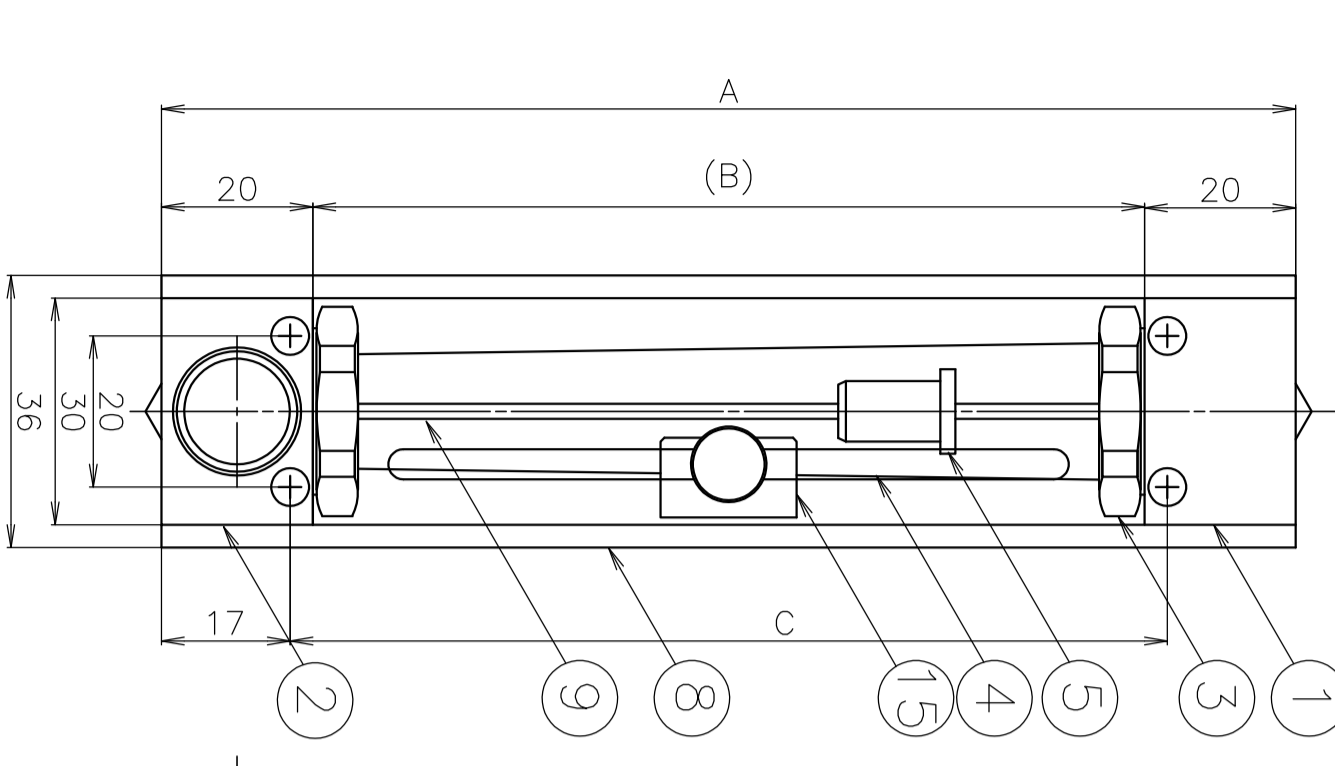
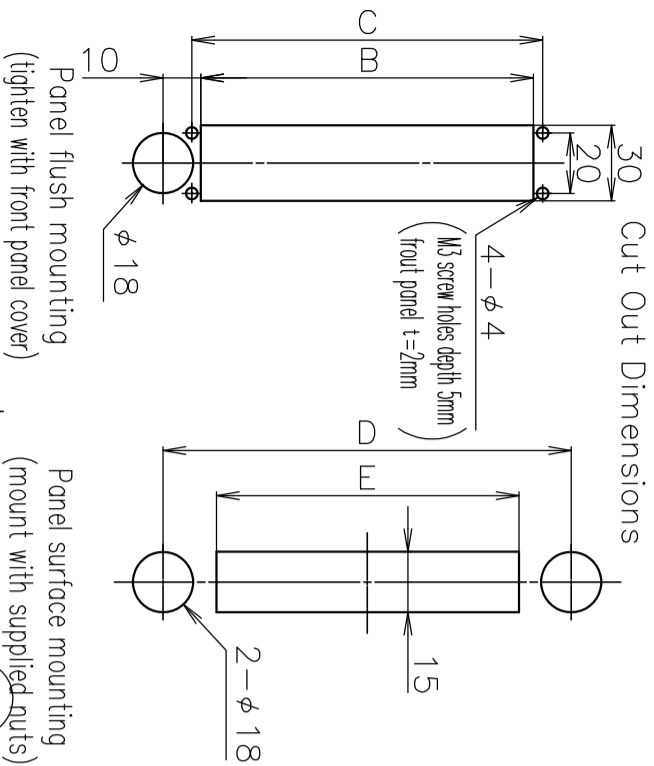
Standard Specifications by nominal size (mm)

SPEC	H ₂ O	Gases	A	B	C	D	E
15	0.1-1L/min 0.3-3L/min 0.5-5L/min	3-30L/min 10-100L/min 15-150L/min	150	110	116	130	100
20	0.3-3L/min 0.5-5L/min	10-100L/min 15-150L/min	200	160	166	180	150
Alarm setting range	20%-90% F.S. All of the above						
Contact capacity	AC100V/DC100V (AC10VA/DC10W)						
Contact method	(A) ON if flow exceeds the preset valve (B) ON if flow falls below the preset valve						

Fluids	H ₂ O and Gases (Hz cannot be used)
Accuracy	F.S.±5%
Proof pressure	0.5MPa(G)
Fluid contact materials	316 Stainless steel,FKM, Hard glass,POM,PTFE,Nylon
Available scale	10:1
Connection end	Rc1/4
Environmental Temp.	10-35°C (Non condensing)

Dwg. No. FR320135A1
 Name Flowmeter with reed switch sensor (with knob)
 Customer MODEL RK1976V (inline needle)
 MODEL:RK1976-VD-**-**
 Specifications
 Fluid:
 Flow rate:
 Total length:
 Pressure: (inlet) (outlet)
 Temperature:
 Connection:
 Contact motion:
 Remarks:

CAUTION!
 To prevent breaking glass by float, DO NOT put pressure change directly on this flowmeter in case you set electromagnetic valve, open and shut it when lay the flowmeter.



16	Needle valve	—	1	
15	Senser bracket	304 Stainless steel	1	
14	Senser knob	ABS	1	
13	Senser cover nut	POM	1	
12	Fix nut	POM	1	
11	Reed switch sensor	POM(case)	1	
10	Mounting nut	Brass	4	
9	Shaft	316 Stainless steel	1	
8	Side plate	Al	2	
7	Back plate	Yellow acrylic resin	1	
6	Front plate	Clear acrylic resin	1	
5	Float	316 Stainless steel	1	
4	Tube	Hard glass	1	
3	Cap nut	Brass	2	
2	Lower block	316 Stainless steel	1	
1	Upper block	316 Stainless steel	1	
No.	NAME	MATERIAL	Qt.	NOTES
SCALE	1/1	R	E	V
3RD ANGLE PROJ.				
KOFLOC Corp.				
DESIGNED	DRAWN	CHECKED	APPROVED	
DATE				

Dimension in mm size

