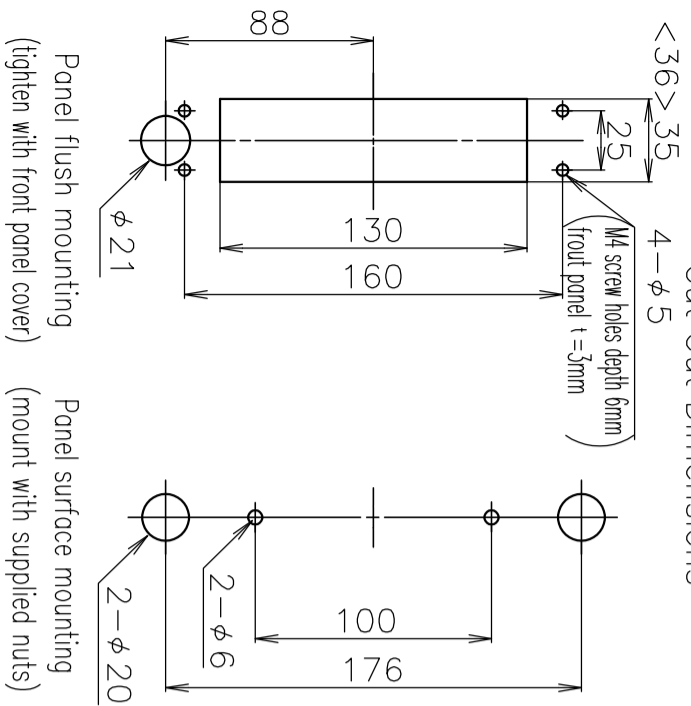


Cut Out Dimensions



CAUTION!

To prevent breaking glass by float, DO NOT put pressure change directly on this flowmeter in case you set electromagnetic valve, open and shut it when lay the flowmeter.

CAUTION!

As this flow meter has low pressure drop specifications, if the differential pressure is 0.1MPa or more, the maximum flow rate reaches on 0.5 revolution or less of needle valve. It difficult to set the flow rate.

Standard Specifications

Fluids	AIR	O ₂	LN ₂	C ₃ H ₈	Pressure loss [kg]
Flow range [L/min]	3-30 5-50	3-30 5-50	4-40 8-60	2.5-25 4-40	0.5 0.7
(Atmospheric pressure)	10-100	10-90	20-120	10-80	1.5
*LN ₂ , C ₃ H ₈ -N ₂ Conversion *Flow range over 50L/MIN would be calibrated with AIR Conversion.					
Proof pressure	0.5MPa(G)				
Accuracy	F.S.±5%				
Available scale	10 : 1				
Temperature resistance	MAX50℃				
Connection end	Rc3/8				
Fluid contact materials	B Brass, Hard glass, 316 stainless steel, 304 stainless steel, POM, NBR, PTFE		S 304 stainless steel, Hard glass, POM, FKM, PCTFE, PTFE, 316 stainless steel		

(Note) The pressure drop is the result of measurement under no load on the fittings and piping.

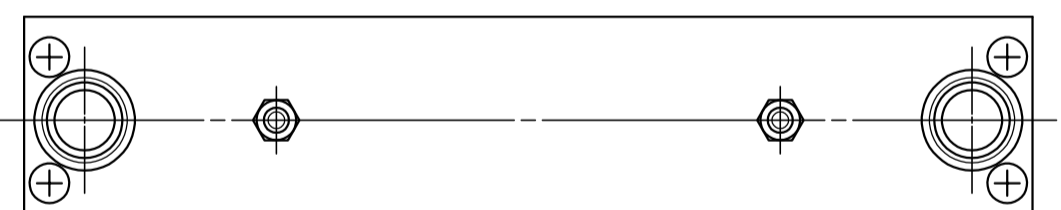
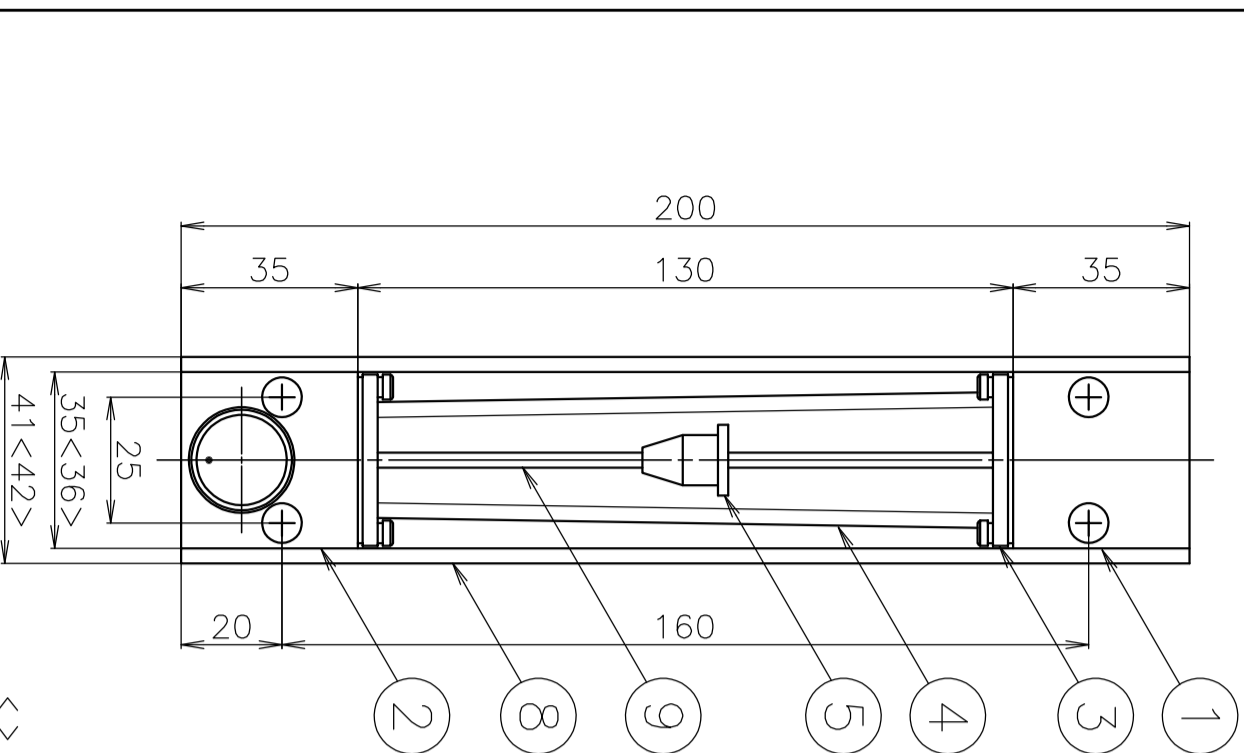
Dwg. No. FR320238A1

Name Low pressure loss for large flowmeter
MODEL RK230 (inline needle)

Customer MODEL:RK230-**-D

Specifications

Fluid:
Flow rate:
Total length: 200mm
Material:
Pressure: (inlet) (outlet)
Temperature:
Connection:
Remarks:



< > shows stainless steel specification measurements

Dimension in mm size

11	Needle valve		1	
10	Mounting nut	304 Stainless steel	2	
9	Shaft	316 Stainless steel	1	
8	Side plate	Al	2	
7	Back plate	Al	1	
6	Front plate	Clear acrylic resin	1	
5	Floot	POM	1	Low pressure loss
4	Tube	Hard glass	1	
3	Cap nut	Brass	2	
2	Lower block	Brass	1	
1	Upper block	Brass	1	
No.	NAME	B S	Qt.	NOTES
SPECIFICATION				
SCALE	1/1.5	R E		
3RD ANGLE PROJ. V				

KOFLOC Corp.

DESIGNED DRAWN CHECKED APPROVED

DATE