

Standard Specifications

Accuracy	±2% F.S.
Flowing	Down → Up
Coating color	Grey~near munsell color N-6.5 (eopxy sort)
Max. working temperature	120℃
Max. working pressure	1.0MPa(G)
Materials of areas in contact with fluid	304 stainless steel,NBR,PSF
Fitting size	RC 3/8"-1"

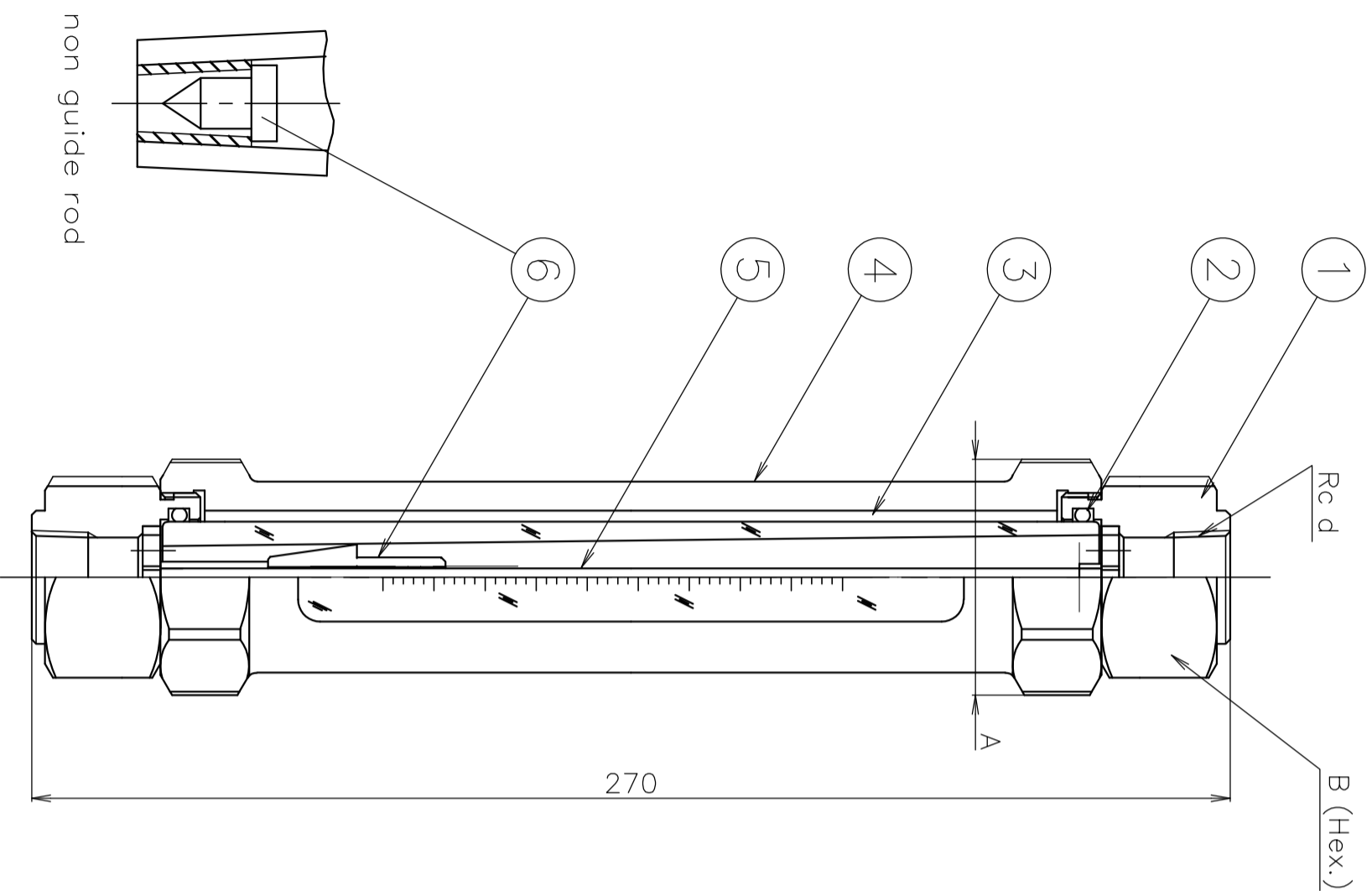
size	H ₂ O	Air(stp) 0MPa AT20℃
10A	1.5~10L/MIN	80~350L/min
15A	1.5~15L/MIN	80~500L/min
20A	1.5~30L/MIN	80~1000L/min
25A	9~100L/MIN	0.4~3m ³ /min

Standard gas: Air

* Calculating calibration for other gases and consult about calibration of using gas

size	d	A	B
10A	3/8	52	41
15A	1/2	52	41
20A	3/4	62	46
25A	1	73	41*

* Hex.



Dimension in mm size

Dwg. No. FR320174A1

Name Flowmeter-Insertion type MODEL RK1950AP

Customer MODEL:RK1950AP-

Specifications

Fluid:

Max. Flow rate:

Size:

Total length:

Pressure: (inlet)

Temperature:

Remarks:

6	Float	304 Stainless steel	1	
5	Rod	304 Stainless steel	1	
4	Housing	FCD400	1	
3	Tube	PSF	1	
2	O-ring	NBR	2	
1	Float stopper	304 Stainless steel	2	
No.	NAME	MATERIAL	Qt.	NOTES
SCALE	NON			
3RD ANGLE PROJ. V				

KOFLOC Corp.

DESIGNED	DRAWN	CHECKED	APPROVED

DATE / /

Standard Specifications

Accuracy	±2% F.S.
Flowing	Down → Up
Coating color	Grey—near munsell color N-6.5 (epoxy sort)
Max. working temperature	120c
Max. working pressure	1.0MPa(G) below 40A 0.8MPa(G) above 50A
Materials of areas in contact with fluid	304 stainless steel, NBR, PSF
Fitting size	JIS10K—RF 10A—100A

Dwg. No. FR320173A1

Name Flowmeter—Flange type MODEL RK1950AP

Customer

MODEL:RK1950AP—
Specifications

Fluid:

Max. Flow rate:

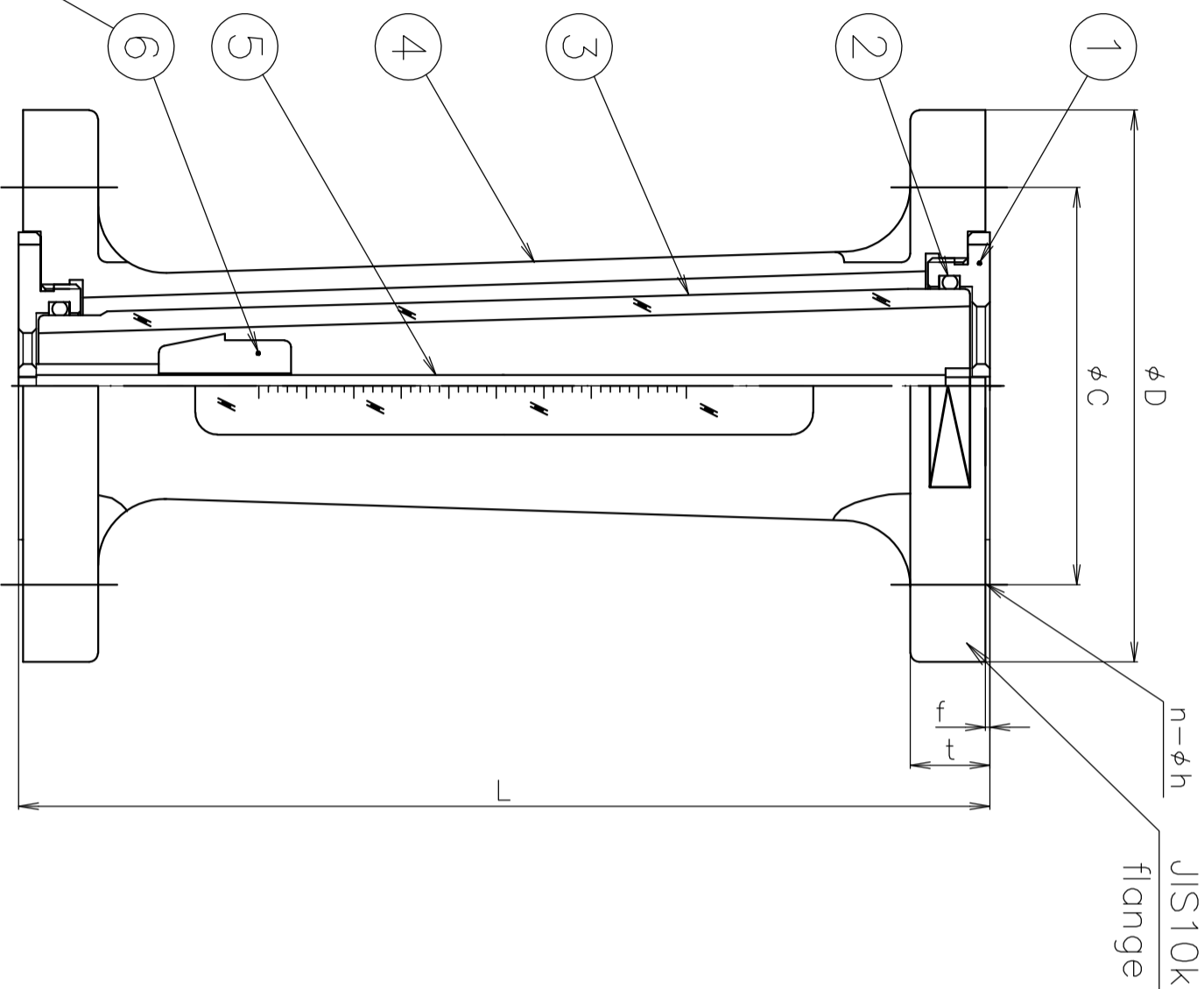
Size:

Total length:

Pressure: (inlet)

Temperature:

Remarks:



Size	H ₂ O	Air (stp) AT20c 0MPa
10A	1.5–10L/min	80–350L/min
15A	1.5–15L/min	80–500L/min
20A	1.5–30L/min	80–1000L/min
25A	9–100L/min	0.4–3m ³ /min
32A	60–150L/min	2–5m ³ /min
40A	90–200L/min	2.5–6m ³ /min
50A	80–300L/min	2.5–9m ³ /min
65A	250–500L/min	8–15m ³ /min
80A	250–500L/min	8–15m ³ /min
100A	400–900L/min	12–25m ³ /min

Standard gas: Air

* Calculating calibration for other gases and consult about calibration of using gas

JIS10kg/cm²RF

size	L	phi D	phi C	f	t	n-phi h
10A		90	65	1	14	4–15
15A		95	70	1	16	4–15
20A		100	75	1	18	4–15
25A		125	90	1	18	4–19
32A	220	135	100	2	20	4–19
40A		140	105	2	20	4–19
50A		155	120	2	20	4–19
65A		175	140	2	22	4–19
80A		185	150	2	22	8–19
100A	250	210	175	2	24	8–19

mm

6	Float	304 Stainless steel	1	
5	Rod	304 Stainless steel	1	
4	Housing	FCD400	1	
3	Tube	PSF	1	
2	O-ring	NBR	2	
1	Float stopper	304 Stainless steel	2	
No.	NAME	MATERIAL	Qt.	NOTES
SCALE	NON	R		
		E		
		V		
3RD ANGLE PROJ.				

KOFLOC Corp.

DESIGNED DRAWN CHECKED APPROVED

DATE / /

non guide lod

Dimension in mm size