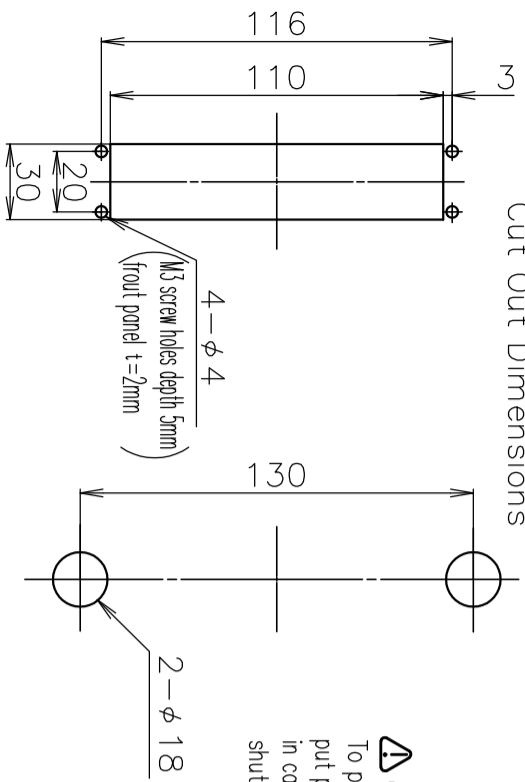


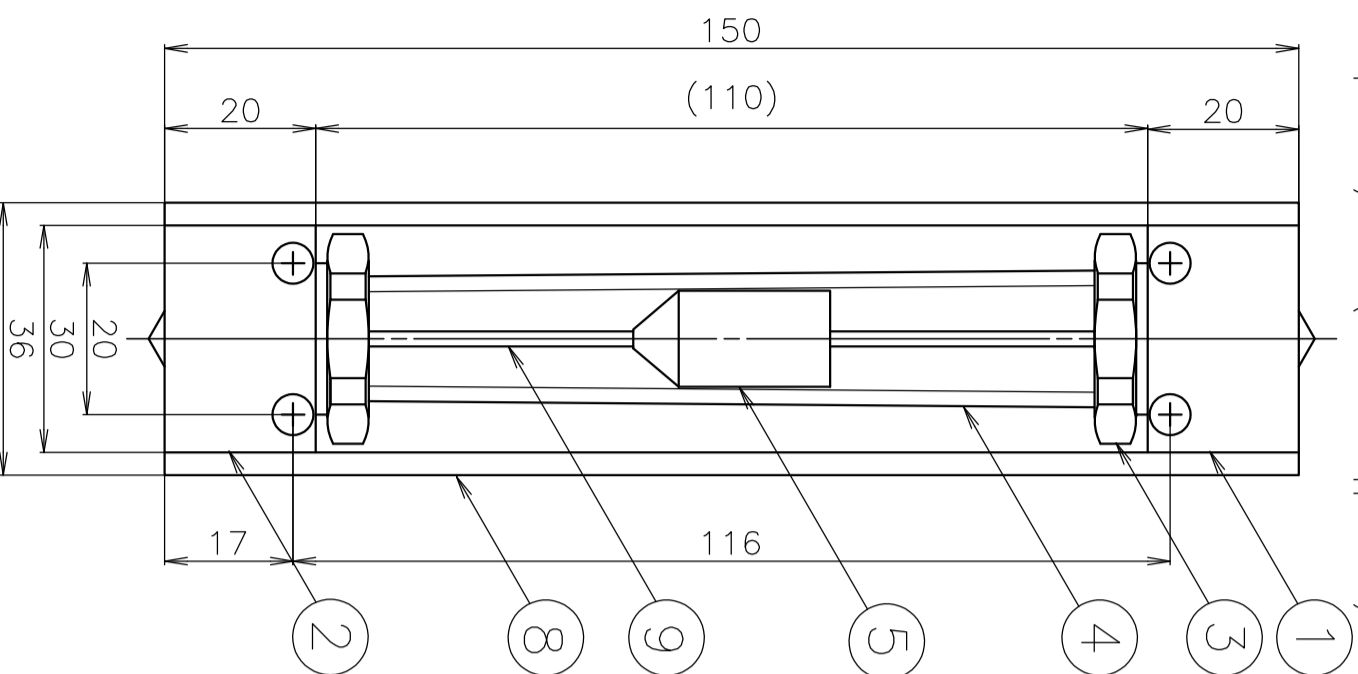
Cut Out Dimensions



⚠ CAUTION!
To prevent breaking glass by float, **DO NOT** put pressure change directly on this flowmeter in case you set electromagnetic valve, open and shut it when lay the flowmeter.

Panel flush mounting
(tighten with front panel cover)

Panel surface mounting
(mount with supplied nuts)



Standard Specifications

Gases		Liquids
Fluids	Standard gases: AIR,N ₂ ,O ₂ ,H ₂ ,He,Ar,CO ₂ * Calculating calibration for other gases and consult about calibration of using gas	Standard liquid: H ₂ O * Calculating calibration for other liquid and consult about calibration of using liquid
Flow range	Various standard ranges from 6 to 60L/min and within 10 to 100L/min(Air conversion-dlm)	0.2to 2L/min
Proof pressure	0.5MPa(G)	
Accuracy	F.S.±2% (Measurement point)	
Available scale	10:1	
Temperature resistance	MAX60c	
Connection end	Rc1/4 (Standard)	
Fluid contact materials	Brass,Hard glass,316 stainless steel, NBR,POM	316 stainless steel,Hard glass, FKM,PTFE

Dwg. No. FR320017A1

Name Precision flowmeter MODEL RK1400

Customer

MODEL : RK1400-

Specifications

Fluid:

Flow rate:

Total length:

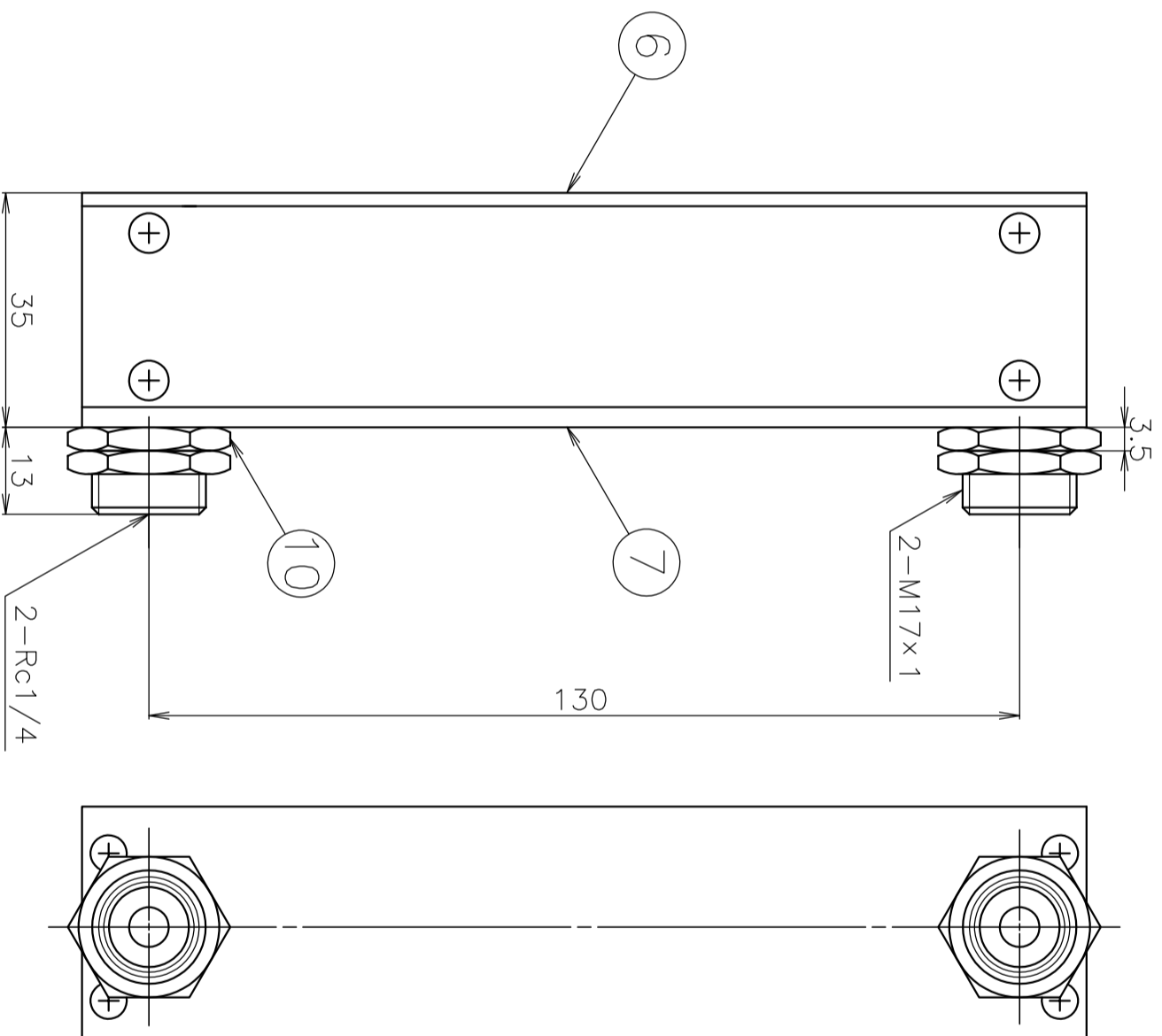
Material:

Temperature:

Connection:

Float:

Remarks:



10	Mounting nut	Brass	4
----	--------------	-------	---

9	Shaft	316 Stainless steel	1
---	-------	---------------------	---

8	Side plate	Al	2
---	------------	----	---

7	Back plate	Yellow acrylic resin	1
---	------------	----------------------	---

6	Front plate	Clear acrylic resin	1
---	-------------	---------------------	---

5	Float	316 Stainless steel	1
---	-------	---------------------	---

4	Tube	Hard glass	1
---	------	------------	---

3	Cap nut	Brass	2
---	---------	-------	---

2	Lower block	Brass	1
---	-------------	-------	---

1	Upper block	Brass	1
---	-------------	-------	---

No.	NAME	SPECIFICATION		Qt.	NOTES
		B	SS		

SCALE	R	E	V
1/1			

3RD ANGLE PROJ.	V

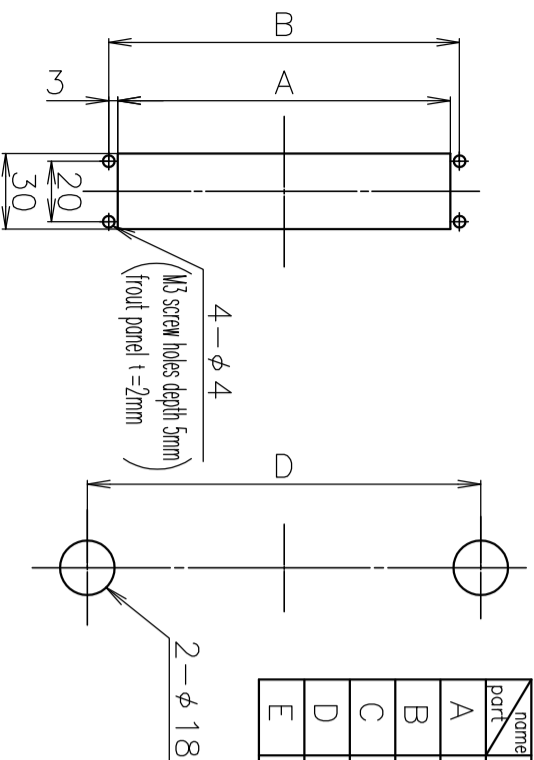
KOFLOC Corp.

DESIGNED	DRAWN	CHECKED	APPROVED

DATE / /

Dimension in mm size

Cut Out Dimensions



nominal part	12	15	20	25
A	80	110	160	210
B	86	116	166	216
C	120	150	200	250
D	100	130	180	230
E	29	29	31	31

Dimensions of each section by nominal size (mm)

Standard Specifications

	Gas	Liquid
Fluids	Standard gases: AIR, N ₂ , O ₂ , H ₂ , He, Ar, CO ₂ * Calculating calibration for other gases and consult about calibration of using gas	Standard liquid: H ₂ O * Calculating calibration for other liquid and consult about calibration of using liquid
Flow range	Various standard ranges from 4 to 40L/min and 5 to 50L/min (Air conversion-atm)	0.15 to 1.5L/min
Proof pressure	0.5MPa(G)	
Accuracy	F.S.±2% (Measurement point)	
Available scale	10:1	
Temperature resistance	MAX60°C	
Connection end	Rc1/4 (Standard)	
Fluid contact materials	B Brass, 316 stainless steel, NBR, Hard glass, PTFE	SS 316 stainless steel, FKM, PTFE, Hard glass

DWG. No. FR320204A1
 MODEL: RK1400-
 CUSTOMER PRECISION FLOWMETER (30 square)
 MODEL: RK1400-
 Specifications

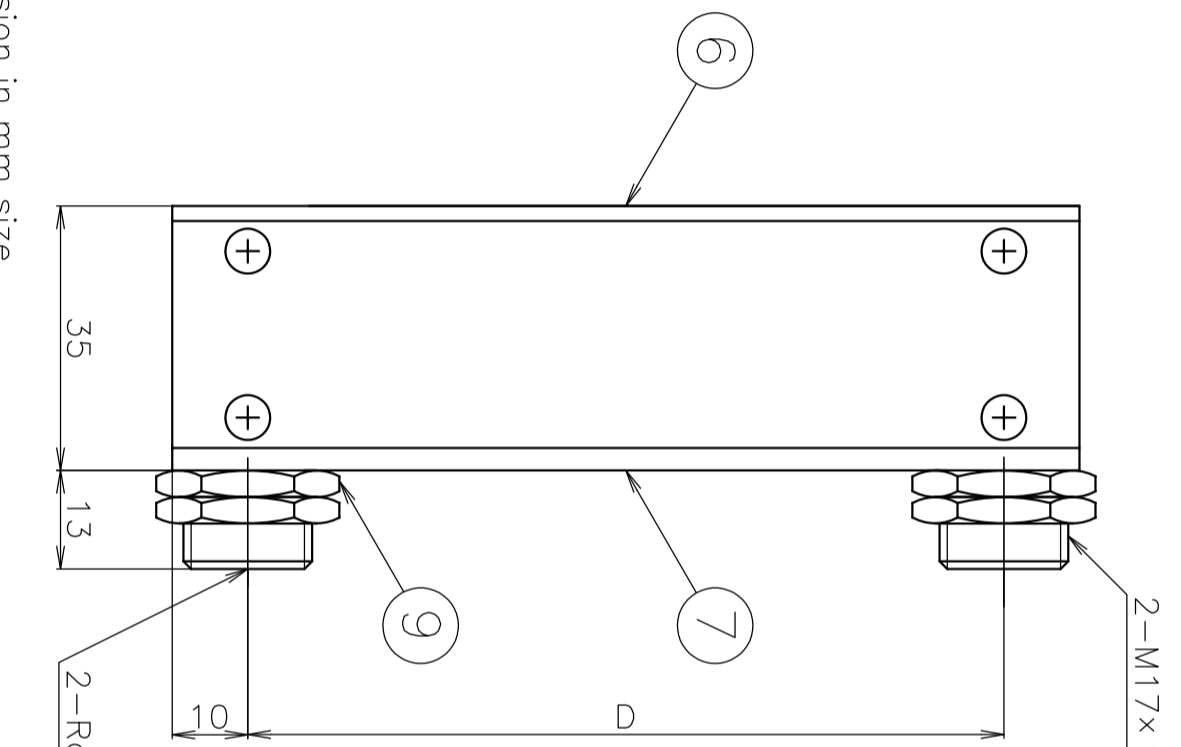
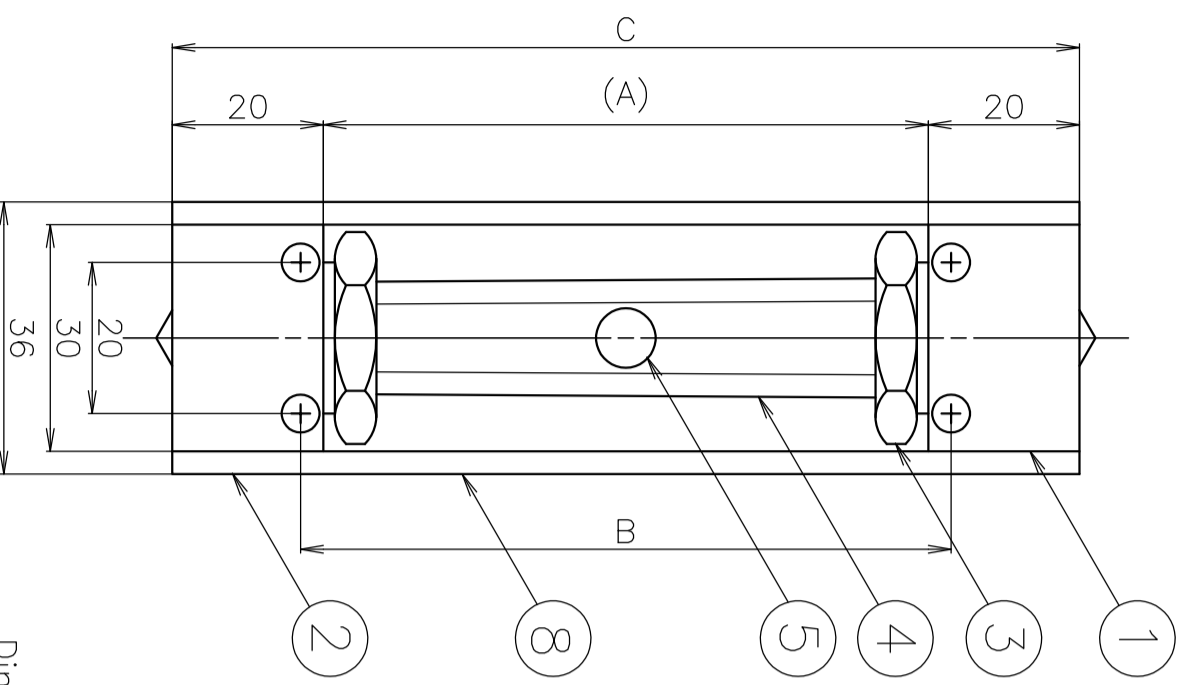
Fluid:
 Flow rate:
 Total length:
 Material:
 Temperature:
 Connection:
 Remarks:

CAUTION!

To prevent breaking glass by float, DO NOT put pressure change directly on this flowmeter in case you set electromagnetic valve, open and shut it when lay the flowmeter.

Panel flush mounting (tighten with front panel cover)

Panel surface mounting (mount with supplied nuts)



Dimension in mm size

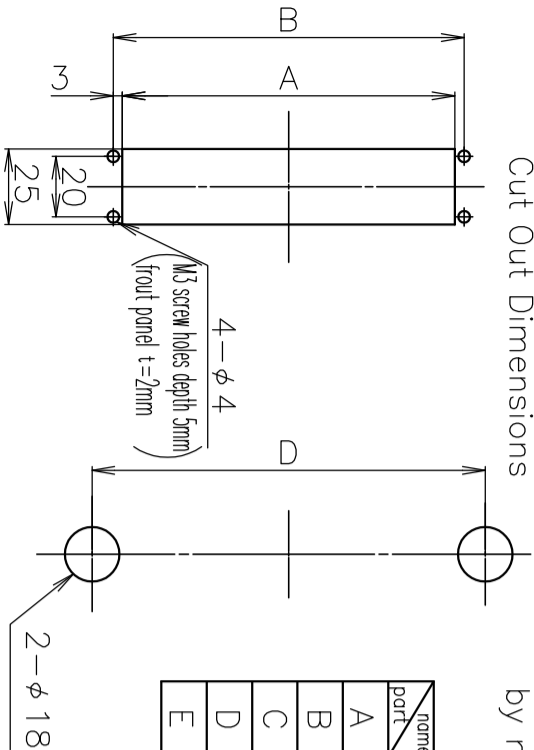
9	Mounting nut	Brass	4	
8	Side plate	Al	2	
7	Back plate	Yellow acrylic resin	1	
6	Front plate	Clear acrylic resin	1	
5	Float	316 Stainless steel	1	
4	Tube	Hard glass	1	
3	Cap nut	Brass	2	
2	Lower block	Brass 316 Stainless steel	1	
1	Upper block	Brass 316 Stainless steel	1	
No.	NAME	B SS	Qt.	NOTES
SCALE		SPECIFICATION		
1/1		R E V		
3RD ANGLE PROJ. V				

KOFLOC Corp.

DESIGNED DRAWN CHECKED APPROVED

DATE / /

Cut Out Dimensions



Dimensions of each section by nominal size (mm)

name part	12	15	20	25
A	80	110	160	210
B	86	116	166	216
C	120	150	200	250
D	100	130	180	230
E	29	29	31	31

Panel flush mounting
(tighten with front panel cover)

Panel surface mounting
(mount with supplied nuts)

CAUTION!

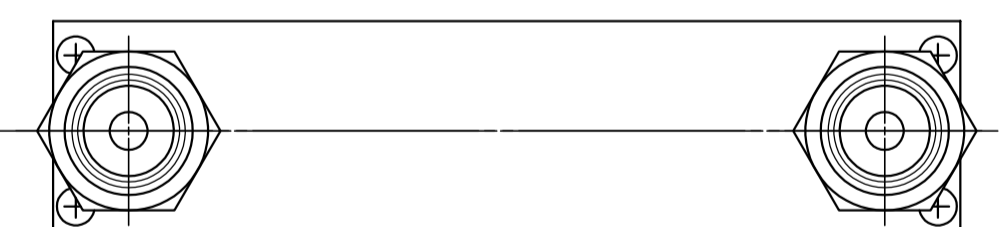
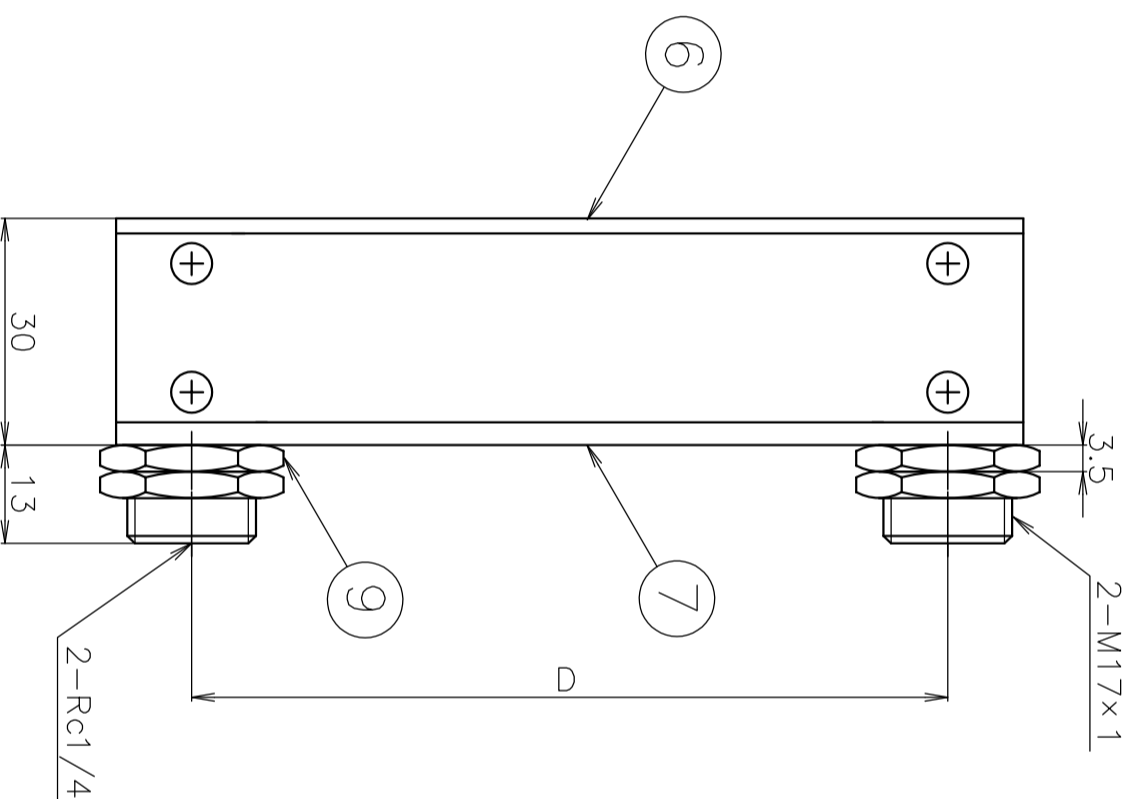
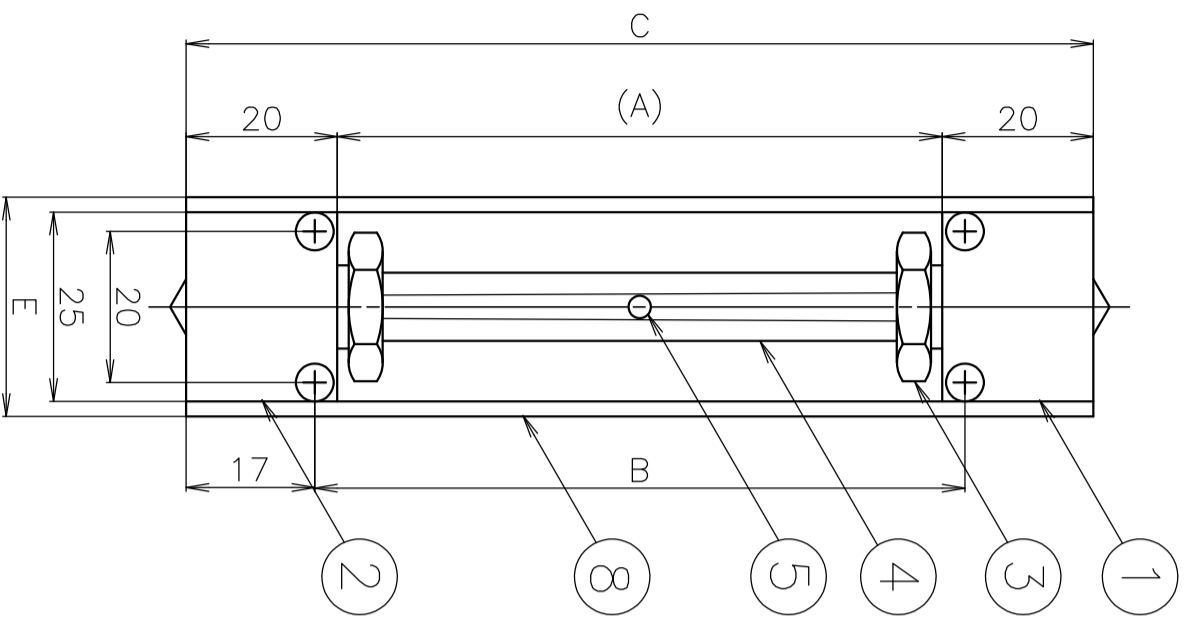
To prevent breaking glass by float, DO NOT put pressure change directly on this flowmeter in case you set electromagnetic valve, open and shut it when lay the flowmeter.

Standard Specifications

	Gases	Liquids
Fluids	Standard gases: AIR, N ₂ , O ₂ , H ₂ , He, Ar, CO ₂ * Calculating calibration for other gases and consult about calibration of using gas	Standard liquid: H ₂ O * Calculating calibration for other liquid and consult about calibration of using liquid
Flow range	Various standard ranges from 0.5 to 5mL/min and 3 to 30L/min (Air conversion-atm)	Various standard ranges from 0.5 to 5mL/min and 0.1 to 1L/min
Proof pressure	1.0MPa(G) for 100mL/min or less 0.7MPa(G) for 5L/min or less 0.5MPa(G) for 10L/min or more	1.0MPa(G) for 5mL/min or less 0.7MPa(G) for 150mL/min or less 0.5MPa(G) for 200mL/min or more
Accuracy	F.S. ±2% (Measurement point)	
Available scale	10:1	
Temperature resistance	MAX60°C	
Connection end	Rc1/4 (Standard) φ6 hoses nipple, φ8 hoses nipple, etc. (Optional)	
Fluid contact materials	B Brass, Hard glass, 316 stainless steel, NBR (PTFE)	SS 316 stainless steel, Hard glass, FKM (PTFE)

Dwg. No. FR320016A1
 Name Precision flowmeter
 Customer MODEL RK1400
 MODEL: RK1400-
 Specifications

Fluid:
 Flow rate:
 Total length:
 Material:
 Temperature:
 Connection:
 Float:
 Remarks:



Dimension in mm size

9	Mounting nut	Brass	4
8	Side plate	Al	2
7	Back plate	Yellow acrylic resin	1
6	Front plate	Clear acrylic resin	1
5	Float	Hard glass or 316 stainless steel	1
4	Tube	Hard glass	1
3	Cap nut	Brass	2
2	Lower block	316 stainless steel	1
1	Upper block	Brass 316 stainless steel	1
No.	NAME	B SS	Qt.
SPECIFICATION			
SCALE	1/1	R	
3RD ANGLE PROJ. V			

KOFLOC Corp.

DESIGNED DRAWN CHECKED APPROVED

DATE