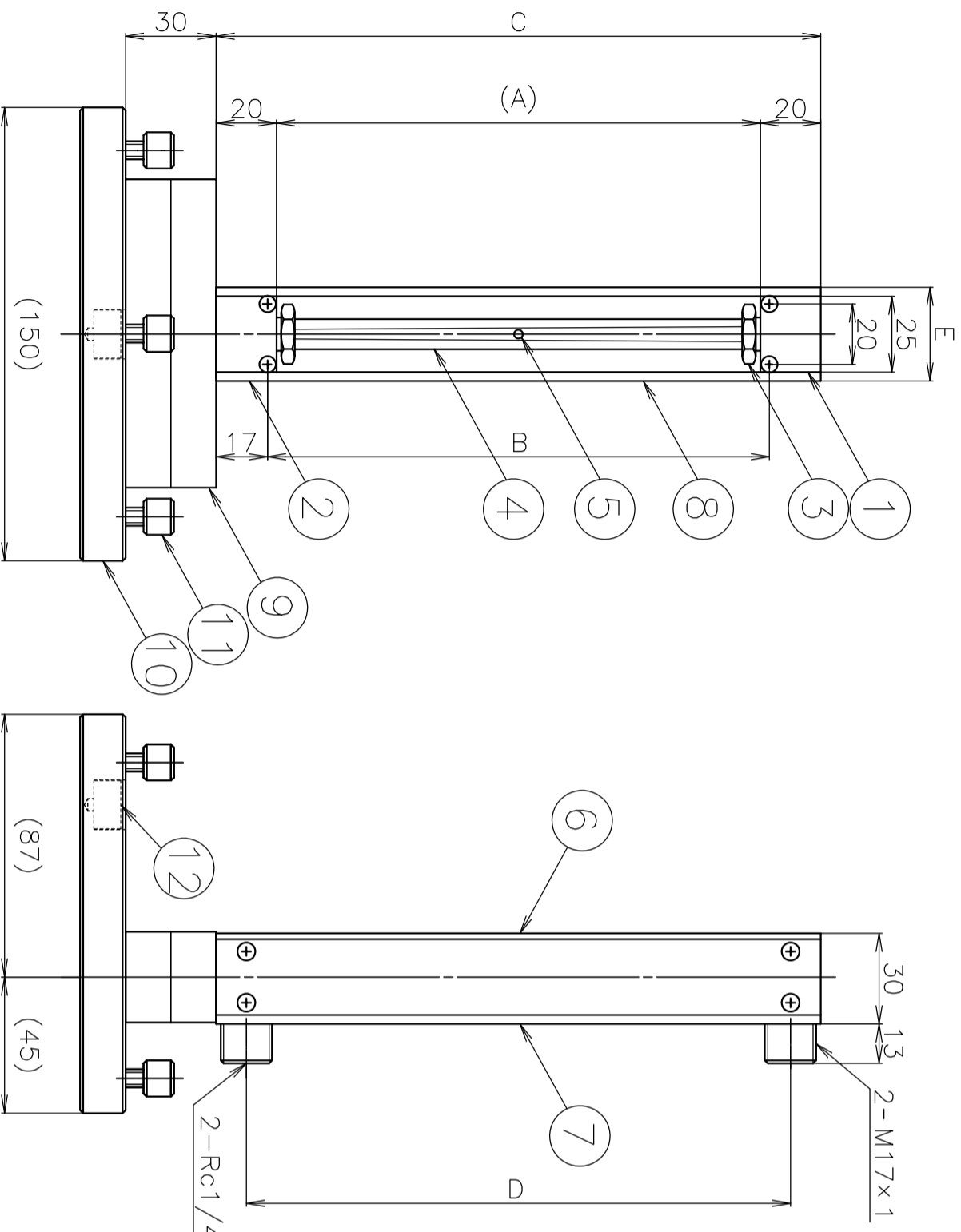


Standard Specifications		
Fluids	Gases Standard gases: AIR, N ₂ , O ₂ , H ₂ , He, Ar, CO ₂ * Calculating calibration for other gases and consult about calibration of using gas	Liquids Standard liquid: H ₂ O * Calculating calibration for other liquid and consult about calibration of using liquid
Flow range	Various standard ranges from 0.5 to 5mL/min and 3 to 30L/min (Air conversion-atm)	Various standard ranges from 0.5 to 5mL/min and 0.1 to 1L/min
Proof pressure	1.0MPa(G) for 100mL/min or less 0.7MPa(G) for 5L/min or less 0.5MPa(G) for 10L/min or more	1.0MPa(G) for 5mL/min or less 0.7MPa(G) for 150mL/min or less 0.5MPa(G) for 200mL/min or more
Accuracy	F.S. ±2% (Measurement point)	
Available scale	10:1	
Temperature resistance	MAX60°C	
Connection end	Rc 1/4 (Standard) φ6 hoses nipple, φ8 hoses nipple, etc. (Optional)	
Fluid contact materials	B Brass, Hard glass, 316 stainless steel, NBR, (PTFE)	SS 316 stainless steel, Hard glass, FKM, (PTFE)

Dwg. No.	FR320214A1	MODEL
Name	Precision flowmeter with stand	RK1310
Customer		
MODEL: RK1310-0- Specifications		
Fluid:		
Flow rate:		
Total length:	(with Stand)	
Material:		
Temperature:		
Connection:		
Floater:		
Remarks:		



Dimensions of each section by nominal size (mm)

nomel part	12	15	20	25
A	80	110	160	210
B	86	116	166	216
C	120	150	200	250
D	100	130	180	230
E	29	29	31	31

CAUTION!
To prevent breaking glass by float, DO NOT put pressure change directly on this flowmeter in case you set electromagnetic valve, open and shut it when lay the flowmeter.

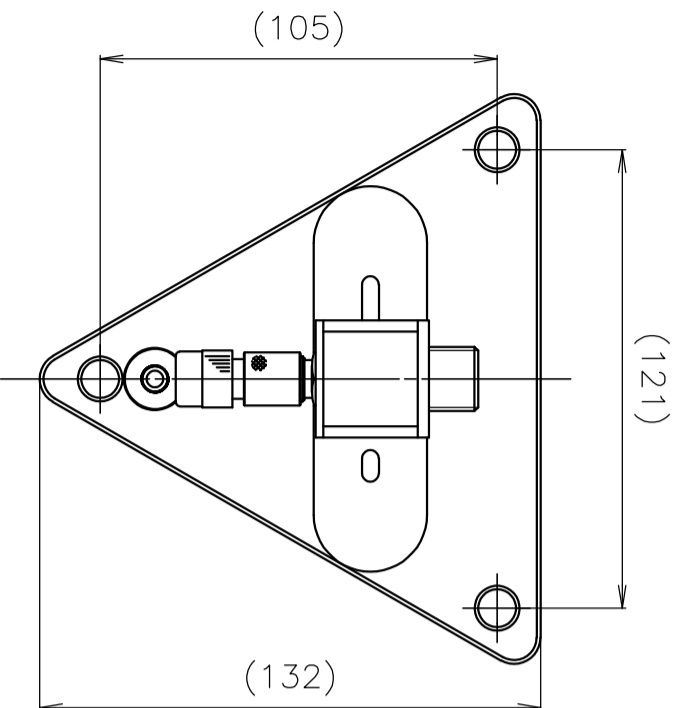
12	Water level		1	
11	Roulette screw	303 Stainless steel	3	
10	Stand	Clear acrylic resin	1	
9	Mounting base	Clear acrylic resin	2	
8	Side plate	Al	2	
7	Back plate	Yellow acrylic resin	1	
6	Front plate	Clear acrylic resin	1	
5	Floater	Hard glass or 316 Stainless steel	1	
4	Tube	Hard glass	1	
3	Cap nut	Brass	2	
2	Lower block	Brass 316 Stainless steel	1	
1	Upper block	Brass 316 Stainless steel	1	
No.	NAME	B	SS	Qt.
SPECIFICATION				
SCALE	1/2	R		
3RD ANGLE PROJ. V				

KOFLOC Corp.

DESIGNED	DRAWN	CHECKED	APPROVED
----------	-------	---------	----------

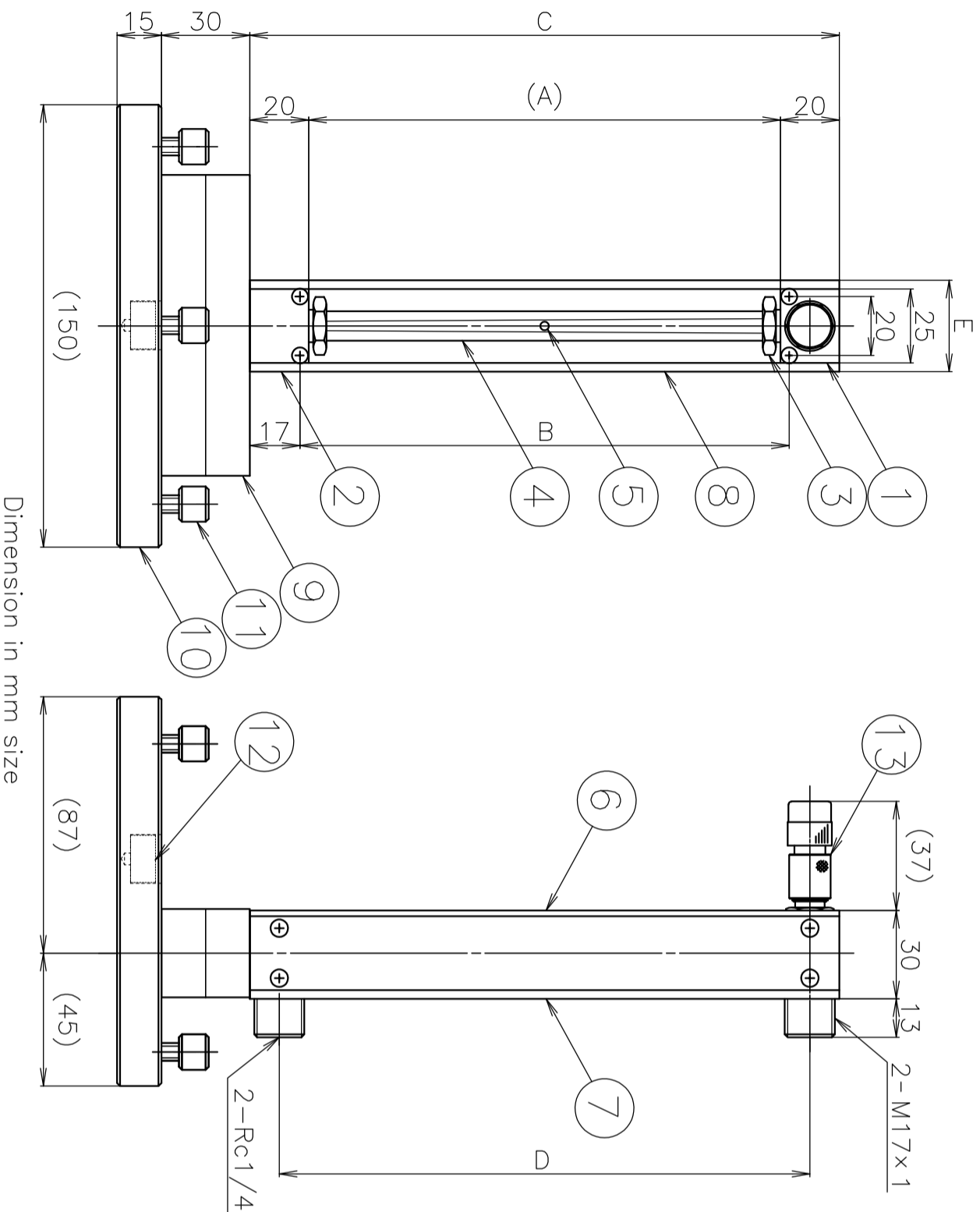
DATE 1 / AUG. / 2022

Dimension in mm size



Standard Specifications		
Fluids	Gases	Liquids
	Standard gases: AIR, N ₂ , O ₂ , H ₂ , He, Ar, CO ₂ * Calculating calibration for other gases and consult about calibration of using gas	Standard liquid: H ₂ O * Calculating calibration for other liquid and consult about calibration of using liquid
Flow range	Various standard ranges from 0.5 to 5mL/min and 3 to 30L/min (Air conversion-atm)	Various standard ranges from 0.5 to 5mL/min and 0.1 to 1L/min
Proof pressure	1.0MPa(G) for 100mL/min or less 0.7MPa(G) for 5L/min or less 0.5MPa(G) for 10L/min or more	1.0MPa(G) for 5mL/min or less 0.7MPa(G) for 150mL/min or less 0.5MPa(G) for 200mL/min or more
Accuracy	F.S. ±2% (Measurement point)	
Available scale	10:1	
Temperature resistance	MAX60°C	
Needle valve	Precision needle valve model 2412	
Connection end	Rc1/4 (Standard) φ6 hoses nipple, φ8 hoses nipple, etc. (Optional)	
Fluid contact materials	B Brass, Hard glass, 316 stainless steel, POM, NBR, (PTFE)	SS 316 stainless steel, Hard glass, FKM, PCTFE, (PTFE)

Dwg. No.	FR320216A1
Name	Precision flowmeter with stand MODEL RK1310V (Outline needle)
Customer	
MODEL	RK1310-VJ-
Specifications	
Fluid:	
Flow rate:	
Total length:	(with Stand)
Material:	
Pressure:	(inlet) (outlet)
Temperature:	
Connection:	
Floqt:	
Remarks:	



Dimensions of each section by nominal size (mm)

nomel part	12	15	20	25
A	80	110	160	210
B	86	116	166	216
C	120	150	200	250
D	100	130	180	230
E	29	29	31	31

CAUTION!
To prevent breaking glass by float, DO NOT put pressure change directly on this flowmeter in case you set electromagnetic valve, open and shut it when lay the flowmeter.

No.	NAME	B	SS	Qt.	NOTES
13	Needle valve	—	—	1	
12	Water level	—	—	1	
11	Roulette screw	303 Stainless steel		3	
10	Stand	Clear acrylic resin		1	
9	Mounting base	Clear acrylic resin		2	
8	Side plate	Al		2	
7	Back plate	Yellow acrylic resin		1	
6	Front plate	Clear acrylic resin		1	
5	Floqt	Hard glass or 316 Stainless steel		1	
4	Tube	Hard glass		1	
3	Cap nut	Brass		2	
2	Lower block	Brass 316 Stainless steel		1	
1	Upper block	Brass 316 Stainless steel		1	

KOFLOC Corp.

DESIGNED DRAWN CHECKED APPROVED

DATE 1 / AUG. / 2022

Dimension in mm size