

Standard Specifications

| | |
|--|--|
| Liquid | H ₂ O (equivalent to tap water) |
| Flow rate rating (in terms of H ₂ O) | 1–10mL/min 10–100mL/min 50–500mL/min 0.1–1L/min |
| Control accuracy (NOTES:2) | ±3% (FULL SCALE) |
| Operating pressure difference | 0.1MPa or more |
| Working pressure | 0.1–0.5MPa(G) |
| Pressure resistance | 0.7MPa(G) |
| Materials of areas in contact with fluid | PPS(containing30% glass fiber), SUS316, FKM, FFKM, PTFE |
| Operating temperature | 15–50°C |
| Connection end | Rc1/8 (M8+Rc1/8) |

| | |
|----------|--|
| Dwg. No. | FR330047A1 |
| Name | Constant Flow Valve for Liquids MODEL2600-PPS |
| Customer | |

MODEL:2600-PPS-*

Specifications

Fluid: H₂O

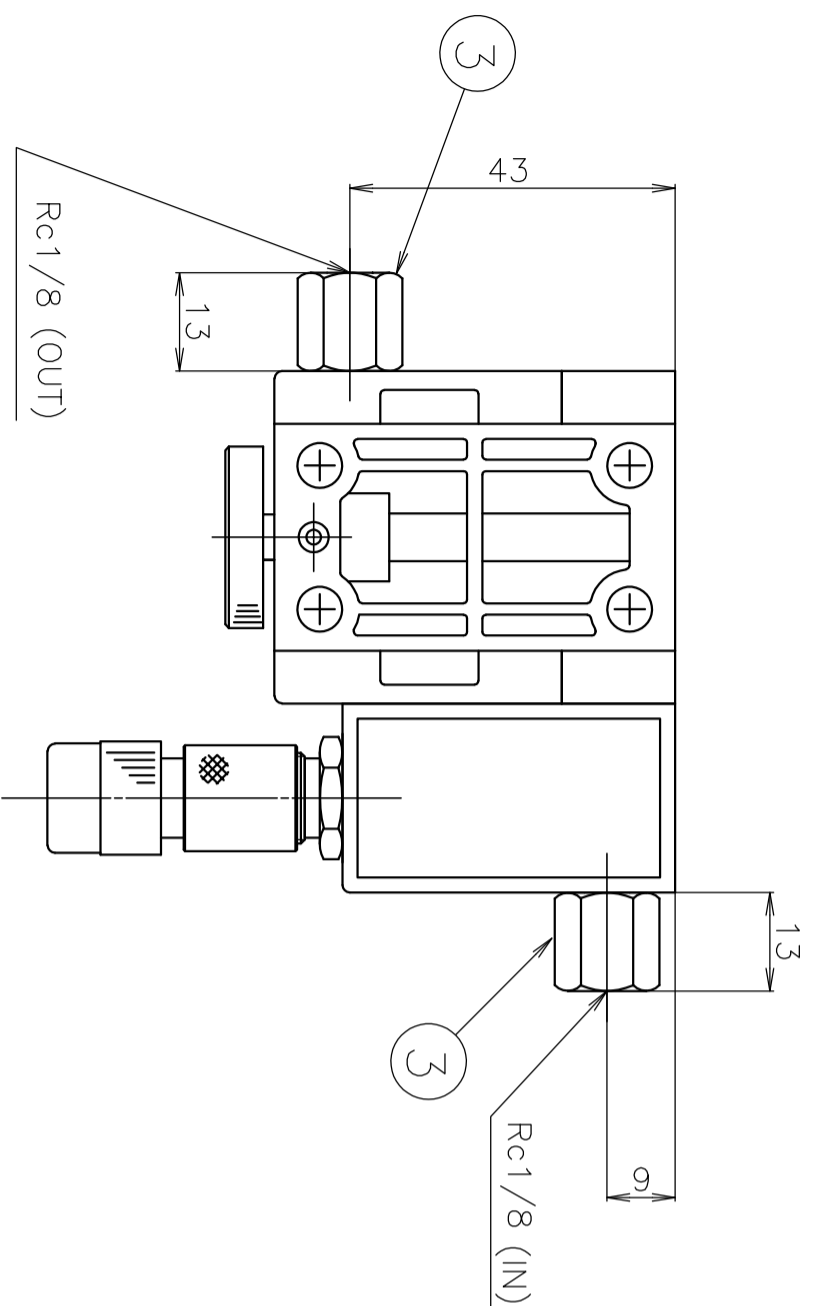
Flow rate:

Connection: Rc1/8 (M8+Rc1/8)

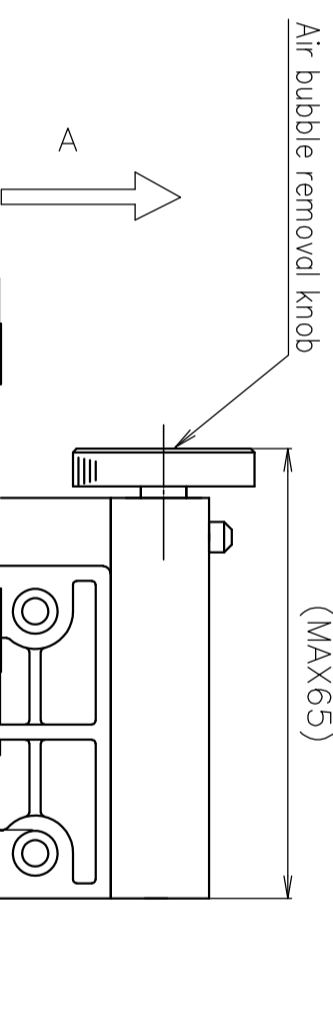
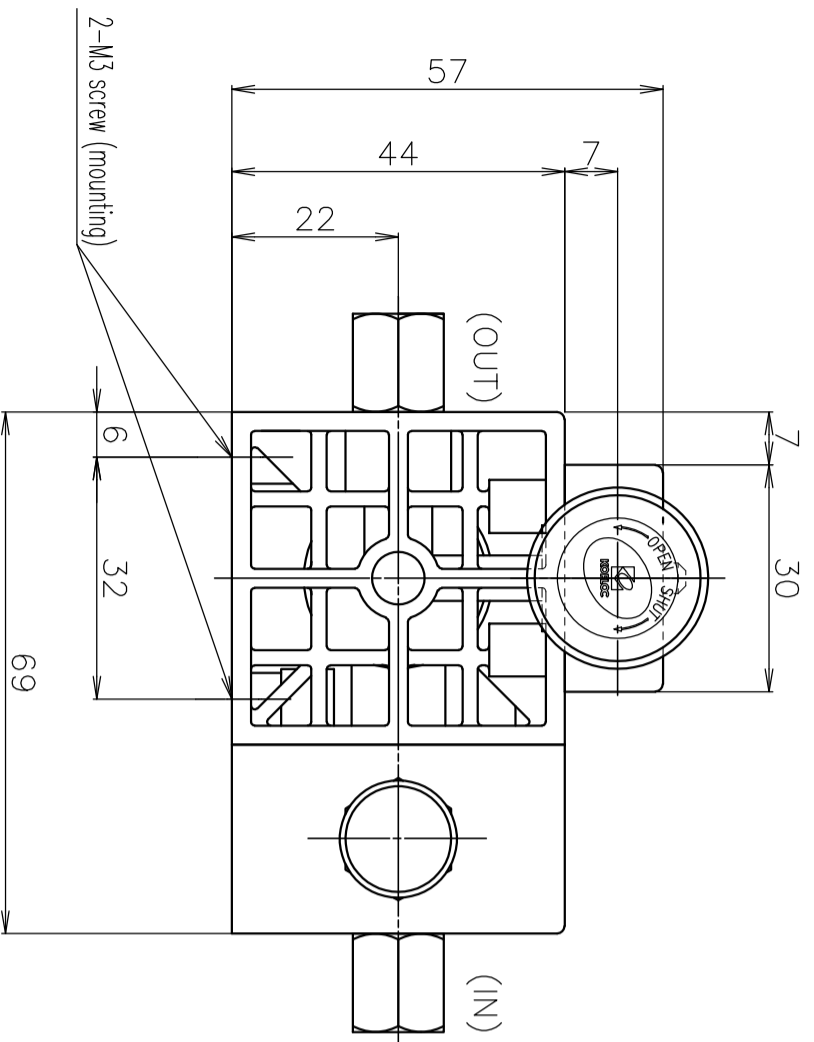
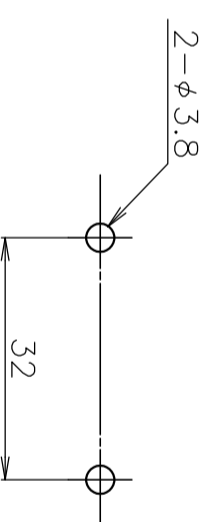
Remarks: Recommended that the valve be installed with the A part facing up (to remove bubbles).

NOTES

1. The specifications and external dimensions are subject to change without notice.
2. The control accuracy is warranted subject to the condition that the liquid temperature is constant because its viscosity varies according to temperature.
3. In case of installing the pipe to model 2600, fix the hexagon of the socket joint (Rc1/8") of model 2600 first so that model 2600 cannot be given the any stress, and then install the piping to model 2600.
4. In case of tightening the socket joint (Rc1/8") to model 2600 again, it should tighten on a torque of 1N·m (the recommended value).



<Panel mounting size>
(Use M3 screws. Thread depth of body 5)



| | | | | |
|-----------------|----------------------|---------------------|-----|-------|
| No. | NAME | MATERIAL | Qt. | NOTES |
| 3 | Socket joint (Rc1/8) | 316 Stainless steel | 2 | |
| 2 | Needle valve | SUS type | 1 | |
| 1 | Constant Flow Valve | PPS type | 1 | |
| SCALE | 1/1 | | | |
| 3RD ANGLE PROJ. | R | E | V | |

KOFLOC Corp.

| | | | |
|----------|-------|---------|----------|
| DESIGNED | DRAWN | CHECKED | APPROVED |
|----------|-------|---------|----------|

Dimension in mm size

DATE 6 / SEP. / 2022