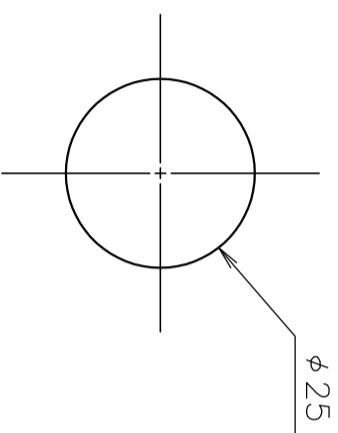


Cut Out Dimension

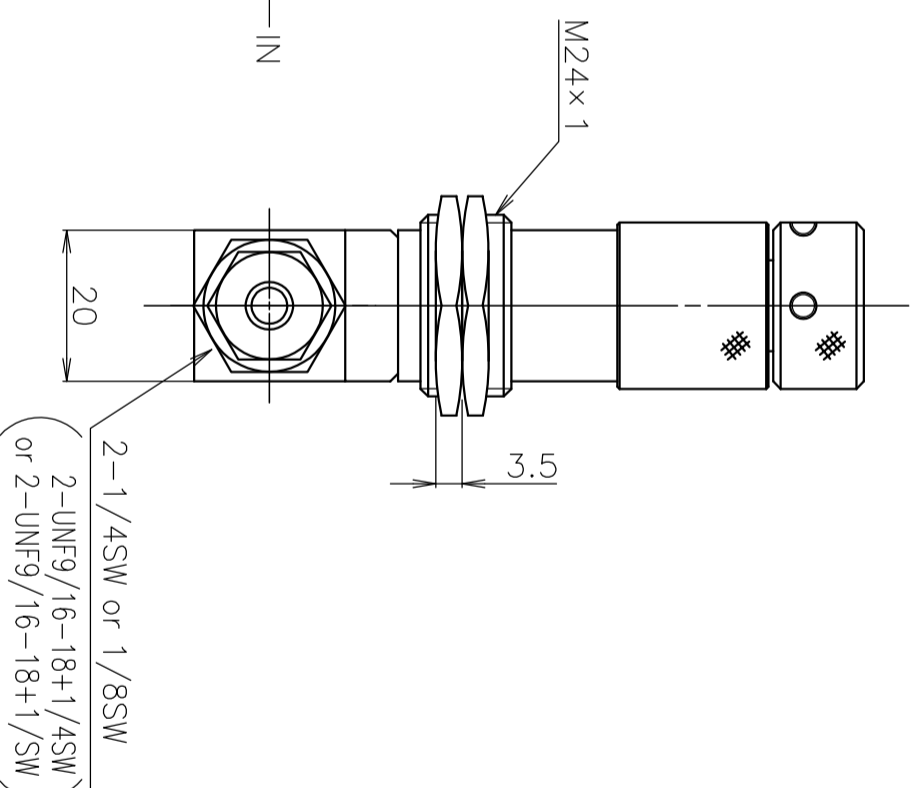
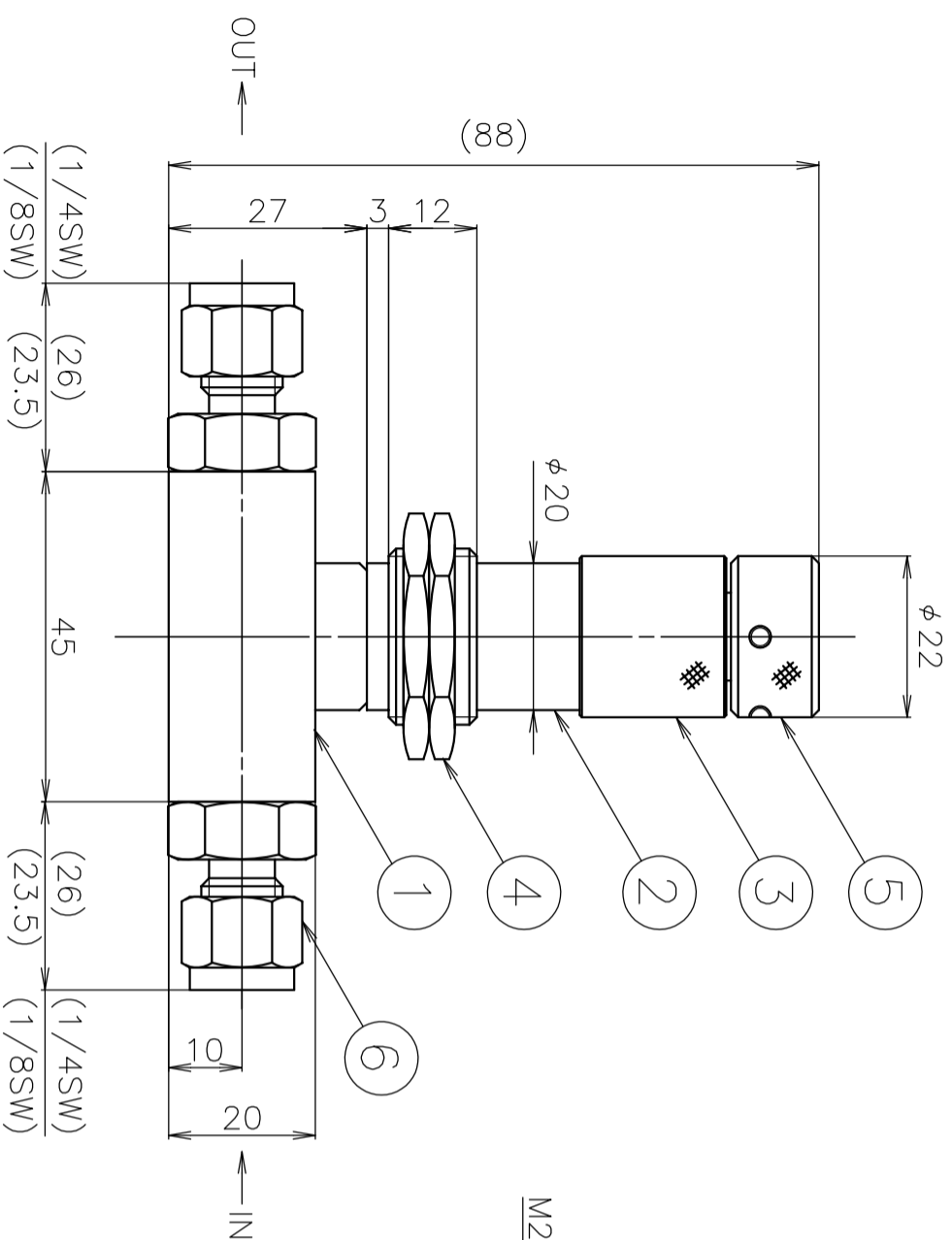


Standard Specifications	
Adjust screw rotation	Approx. 13–16 turns
Max. working pressure	1.0MPa(G)
Max. working temperature	120°C
Materials of areas in contact with fluid	316 stainless steel, PCTFE, FKM
Fluids	Gas, Liquid
Connection end	1/4SW (Standard), 1/8SW (Optional)
Leak testing	below 2×10^{-8} Pa · m ³ /sec

DWG. No. FR330004A1
 NAME BELLOWS NEEDLE VALVE
MODEL 2450 (T type)
 CUSTOMER
 MODEL: 2450-T-

Specifications

Fluid:
 Max Flow rate:
 Connection:
 Inlet–Outlet
 Pressure difference:
 Remarks:



No.	NAME	MATERIAL	Qt.	NOTES
6	Fitting	316 Stainless steel	2	
5	Knob	Brass	1	
4	Mounting nut	Brass	2	
3	Needle cover	Brass	1	
2	Needle body	316 Stainless steel	1	
1	Main unit	316 Stainless steel	1	

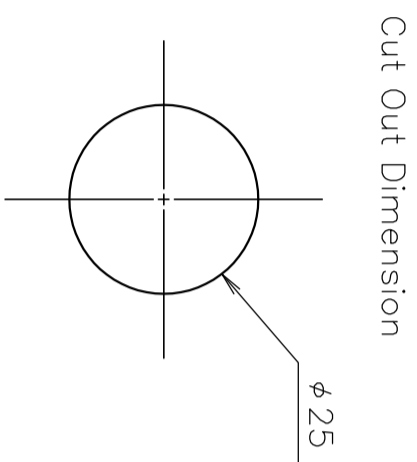
SCALE 1/1
 3RD ANGLE PROJ. R E V

KOFLOC Corp.

DESIGNED DRAWN CHECKED APPROVED

DATE / /

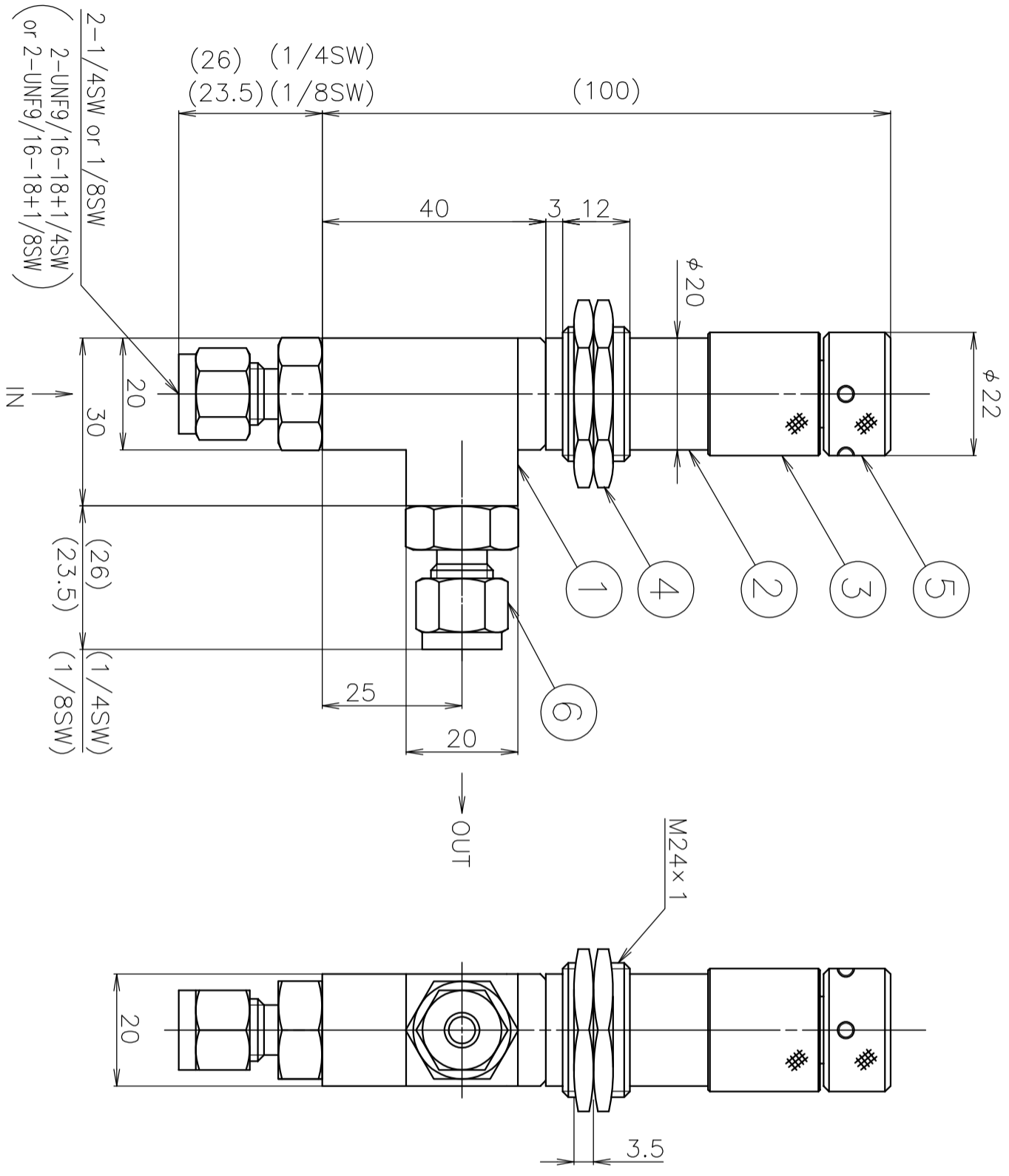
Dimension in mm size



Standard Specifications

Adjust screw rotation	Approx. 13-16 turns
Max. working pressure	1.0MPa(G)
Max. working temperature	120°C
Materials of areas in contact with fluid	316 stainless steel, PCTFE, FKM
Fluids	Gas, Liquid
Connection end	1/4SW (Standard), 1/8SW (Optional)
Leak testing	below 2×10^{-8} Pa · m ³ /sec

DWG. No.	FR330003A1
NAME	BELLOWS NEEDLE VALVE MODEL 2450 (L type)
CUSTOMER	
MODEL	2450-L- Specifications
Fluid:	
Max Flow rate:	
Connection:	
Inlet-Outlet	
Pressure difference:	
Remarks:	



6	Fitting	316 Stainless steel	2	
5	Knob	Brass	1	
4	Mounting nut	Brass	2	
3	Needle cover	Brass	1	
2	Needle body	316 Stainless steel	1	
1	Main unit	316 Stainless steel	1	
No.	NAME	MATERIAL	Qt.	NOTES
SCALE	1/1			
3RD ANGLE PROJ.				

KOFLOC Corp.

DESIGNED	DRAWN	CHECKED	APPROVED

Dimension in mm size

DATE	/	/
------	---	---